

HOPWOOD HALL COLLEGE AND UNIVERSITY CENTRE

COURSE GUIDE

for school leavers

2024 Entry

Everything you need to know about

T-Levels, vocational programmes and apprenticeships.

Choose the route that works best for you.



Hopwood Hall College
& University Centre

hopwood.ac.uk



OPEN EVENT

for School Leavers

Thursday 18th April
4.30pm – 6.30pm

Come and explore!

- T Levels
- Apprenticeships

AT MIDDLETON AND ROCHDALE CAMPUSES

Register at hopwood.ac.uk – join us!

**Your Future
Starts Here!**



**Hopwood Hall College
& University Centre**

PRINCIPAL'S WELCOME

Welcome to our 2024 School Leavers' Course Guide. It gives me great pleasure to invite you to make our college, your college.

This might very well be your first real glimpse at what we can offer you at Hopwood Hall College and University Centre. It's much more than that though. As you flick through the pages and narrow down the courses that catch your eye, just consider that this is your first step on what promises to be a very exciting journey for you!

The guide is full of information on courses that can get you where you want to be - whether that's straight into your desired job, apprenticeship or right into your first choice university. Find the one that best fits your unique interests and skills.

You'll also find details about our apprenticeship pathways, our excellent facilities and the first class support we offer each of our learners. All in all, it's an introduction to how we can tap into your potential and kick-start that brighter future for you.

It's an excellent time to join us, not least because we are now delivering T-Levels - perfect for getting you industry-ready.

Whichever one of our pathways appeals to you, you're guaranteed an exceptional standard of teaching and support at Hopwood. This is why we're one of the top performing colleges in Greater Manchester, with a record for great results.

The time you spend in lessons is only one part of life at college. We pride ourselves on putting our students at the heart of everything we do, which is why we offer a wide range of extra-curricular enrichment activities.

We also offer free gym membership, volunteering opportunities, educational visits and the chance to represent your peers as a student representative. Every day is what you make it - whether you're taking part in team sports or learning a skill like British Sign Language.

We're confident you'll enjoy every minute on campus. As well as having fun as you work towards gaining your qualification, we'll also keep you thinking about the future. Our award-winning careers team is always on hand helping you to access resources about employment pathways and the best ways to lock down your dream career.

Above all, we are here to support you every step of the way in achieving your goals, growing in confidence and becoming successful.

I very much hope you enjoy reading this year's guide about what we hope will become your college.

I look forward to welcoming you to Hopwood Hall College.

Julia Heap
Principal and Chief Executive
Hopwood Hall College and University Centre



**Strong
for Skills**
Ofsted 2023



**Education & Skills
Funding Agency**

Ofsted
Good
Provider

Our Vision:

Bringing out the best in you!

We work with our community and have restless ambition to raise aspirations by encouraging and enabling people of all ages.

We provide inspiring opportunities for all to thrive in life and work and make a positive impact across the Borough of Rochdale, Greater Manchester and beyond.

Our Values

INTEGRITY



We do the right thing, our learners and our community are at the heart of all we set out to achieve. Our learner centred approach underpins everything we accomplish.

NURTURING



We empower staff and learners to build autonomy and be the drivers of their own destinies, developing resilience, pride and confidence in life, learning and work.

ENJOYMENT



Success and achievements are encouraged, recognised and celebrated in our thriving college community.

AMBITION



We encourage learners and staff to have the courage to aim high, push their boundaries and achieve higher aspirations.

SUSTAINABILITY



We are continually working to create a sustainable college that demonstrates an agile curriculum, healthy finances and a positive impact on the environment and economy.

COURSE LISTINGS

- FIND YOUR PERFECT COURSE

Your Place	6
Your Future	7
Secure your place	8
Choosing the right course for you	12
Where will your course take you next?	13
T-Levels	14
Alumni	24
Student Experience	28
Learner Voice	34
Student Support Services	35
iLearn Centre	36
Additional Learning Support	37
Equality, Diversity and Inclusion	38
Careers and Employability	39
Money Matters	40
Parents and Carers	41
How to find us	43
Bus timetables and maps	44
Our Pass	48
Apprenticeships	50
English and Maths	53

MIDDLETON CAMPUS

Building Trades & Engineering

Brickwork	54
Carpentry & Joinery	56
Electrical Installation	58
Professional Construction and the Built Environment	60
Engineering Technologies	62
Electrical & Electronic Engineering	64
Mechanical Engineering	66
Multi-skills	68
Painting & Decorating	70
Plumbing	72
Automotive	74

Business & Accounting

Accounting	76
Business	78

Travel

Travel & Tourism	80
------------------------	----

Skills for Life

Skills for Life	82
-----------------------	----

Digital, IT & Computing

Digital Technology and Computing	84
--	----

Science

Science	86
---------------	----

Animal Management

Animal Management	88
Animal Nursing	92
Equine	94

Sport

Introduction to Sport	96
Sports and Exercise Science	98
Personal Training Academy	100
Rugby Academy	102
Football Academy	104
Women's Football Academy	106
Basketball Academy	108

Uniformed Public Services

Uniformed Public Services	110
---------------------------------	-----

MIDDLETON & ROCHDALE CAMPUS

Health & Social Care

Health & Social Care	112
----------------------------	-----

ROCHDALE CAMPUS

Creative and Digital Media

Art & Design	114
Graphic Design	116
Games Development	118
ESports	120
Media Production	122

ESOL

ESOL	124
------------	-----

Hair & Beauty

Introduction to the Hair & Beauty Sector ..	126
Beauty Therapy	128
Hairdressing	130
Barbering	132
Hair and Media Make-up	134

Education & Childcare

Education and Childcare	136
-------------------------------	-----

Hospitality & Catering

Hospitality & Catering	138
------------------------------	-----



YOUR PLACE: Two campuses, one College community

Both campuses provide learners with a distinct and friendly community within the wider college community, so you are bound to find people with similar interests and passions to you.

Visit Middleton Campus for:

- Apprenticeships
- Accounting
- Animal Management
- Animal Nursing
- Applied Science
- Apprenticeships
- Basketball Academy
- Brickwork
- Business
- Carpentry & Joinery
- Construction and the Built Environment
- Digital Technology and Computing

[TAKE A VIRTUAL TOUR>](#)

- Electrical Engineering
- Electrical Installation
- Engineering Technologies
- Equine Care
- Equine Management
- Fitness Academy
- Football Academy
- GCSE Combined Science - Synergy
- Health & Social Care
- Mechanical Engineering
- Motor Vehicle
- Multi-skills
- Painting & Decorating
- Personal Training Academy
- Plastering
- Plumbing
- Rugby Academy

- Skills for Life
- Sport
- Sport and Exercise Science
- Travel & Tourism
- Uniformed Public Services
- Veterinary Nursing
- Women's Football Academy

T-Levels

- Accounting
- Animal Care and Management
- Building Services Engineering for Construction
- Design and Development
- Design Surveying and Planning
- Digital Support Services
- Maintenance and Installation
- Management and Administration
- Production, Design and Development
- Science

Visit Rochdale Campus for:

- Apprenticeships
- Art & Design
- Barbering
- Beauty Therapy
- Education & Childcare
- ESOL
- E-sports
- Games Development
- Graphic Design
- Hair and Media Make-Up
- Hairdressing
- Health & Social Care
- Hospitality & Catering
- Media Production

T-Levels

- Education and Early Years
- Health - Mental Health Team
- Health - Adult Nursing

[TAKE A VIRTUAL TOUR>](#)

YOUR FUTURE, it's our priority.

It doesn't have to be daunting. We will help you every step of the way to get the most out of your time at Hopwood Hall College.

Everything we do at College ties in to how we can help you to get where you want to be, whether that is going to university or moving into employment.

Your course, our facilities, our wide range of enrichment opportunities and extra curricular activities are all designed to develop you academically & personally.

We're there for you

It is very important to us that you feel happy and supported throughout your time at college. You will have a **Progress Tutor (PT)** who will help you to succeed, both in your studies and personally. Your PT will be a really important contact for you throughout your time at College. PT's are committed to your progress and development and are on hand to help you at all times.

You'll attend regular development sessions with your PT, this is your chance to talk about any welfare or personal issues you may have. No question is too small and no problem too big – confidential advice and support is what they do best.

Your PT will act as the linchpin between your studies and the wider college community network of support. They will help develop your personal, social, academic and employability skills.

Exceptional staff, exceptional students

We believe that exceptional teaching and learning begins with exceptional staff. Together with our talented and hard-working students they make up our successful and thriving college community.



Your college day

Life at college may be a little different from what you're used to at school. Classes are usually smaller and you'll have the freedom and flexibility to choose from a range of study programmes which will allow you to focus on what you really enjoy.

You'll be given responsibility for your own learning and studies, but don't let that worry you - you'll have Academic Tutors and Progress Tutors to help keep you on track every step of the way.

Your day will be full with a timetable that will be made up of classes, tutorials, enrichment options, work experience and private study time. There are iLearn Centres on both campuses which you can use to complete assignments on site, cafes to catch up with friends and enrichment activities to fill your free time. You won't be short of things to keep you busy and help you to live college life to the full.

Investing in you

We continue to invest in our specialist teaching and learning facilities across both college campuses to ensure that all students have access to the very best state of the art equipment and resources to help them succeed. Our training facilities reflect the developments in industry and business.

There's a place for everyone at Hopwood, here's how to secure yours:

Applying to Hopwood Hall College couldn't be easier. Just follow these easy steps to join us and start an incredible learning experience:

Step 1:

Choose the course that works for you

Spend some time exploring the huge range of exciting course options we offer and check the entry requirements.

Be sure to book your place at our next open event too as these events give you the perfect opportunity to explore your options, meet our expert tutors and have all your questions answered. It's a great way of checking out our amazing training facilities too! Check out the upcoming dates at www.hopwood.ac.uk/news-and-events/upcoming-events

If you're uncertain which course or level to apply for then why not contact our friendly Careers & Employability Team on careers@hopwood.ac.uk, they're always happy to help.

Step 2:

Complete your online application

Once you've settled on the course that best suits you then complete your online application at www.hopwood.ac.uk. It's quick, easy and secure. (NB: Print application forms are also available on request if required).

Don't leave it too late, our courses are extremely popular and fill up fast!

You've made a great choice!

Step 3:

Your Introduction to Hopwood Hall College

After submitting your online application you will then see the confirmation page where you will be asked to select the interview date that best suits you. (NB: We refer to this as an 'interview' however, there's no need to feel apprehensive as this is simply an opportunity for you to meet your tutor and talk through the next steps so that you can be sure that this is the right course for you).

Your interview/introductory session date will be confirmed by email, text and in writing within a week of applying. Be sure to attend your session.

Step 4: Congratulations!

Once you've attended your interview/introductory session then your offer of a place will be confirmed in writing within two weeks. Your level of study will remain conditional upon your GCSE results at the time of enrolment.

Please be sure to use the link provided in the offer letter to click through to accept your offer - this secures your place.

Step 5: Stay firmly focused on your GCSEs

Work hard to achieve the best grades you can and set aside plenty of time for revision.

Step 6: It's time for your New Starter Experience Session

Once you've secured your place you will be invited to register to attend your 'New Starter Experience' session. This will be held on Tuesday 2nd July 2024. Look out for your invitation!

This is a brilliant opportunity for you to kickstart your Hopwood Hall journey and make certain that you are on the right track. It's also a chance to get to know your tutors, find your way around campus and start to get to know others that have chosen the same course.

This is also a good point to dip into the resources provided at **www.hopwood.ac.uk/school-leavers/preparing-for-college** so that you feel more than ready to take your next step and move up to college.

Step 7: Time to enrol!

You will receive a letter confirming your enrolment date and time. At enrolment you'll be given all the information you need to start your course in September 2024. See you there!

DON'T LEAVE IT TOO LATE!

Be sure to research your options at our Autumn open events and submit your application as early as possible as our courses always fill quickly so it's best to secure your place early to avoid disappointment.

DO WE HAVE YOUR CORRECT DETAILS?

We like to keep in touch with updates for all applicants via email and text. Please be sure to let us know if your details change after you apply by logging into your account and updating your application online or by emailing: **enquiries@hopwood.ac.uk**

If you have any queries relating to your application at any point, please contact our Admissions team who are always happy to help:

Contact Details for the Admissions Team:

[e. admissions@hopwood.ac.uk](mailto:e.admissions@hopwood.ac.uk)

t. 0161 643 7560

Text. 078600 40302



A brighter future is closer than you think



**Hopwood Hall College
& University Centre**

www.hopwood.ac.uk

Your future: Choosing the course that's right for you

We recognise that making the choice about what to study after school is often just the start of your career journey, and where those studies will take you is just as important. We can help you reach your goals or even discover them if you are not sure what you want to do just yet.

1. Talk to our award-winning Careers and Employability Team

Our dedicated Careers and Employability team are here to give you advice and guidance and to help you make sense of all the career pathways available to you. They can talk to you about the subject area you are interested in, your long-term career goals, what exam grades you expect to get and all things careers related.

2. Look out for our Student Recruitment Team

Our Student Recruitment Team regularly visit schools across the region so please say hello if you see them at your school. They're always more than happy to answer all your questions.

3. Be sure to sign up to one of our Open Events for school leavers

Our open events give you and your parents/carers the perfect opportunity to talk to our expert team of tutors on the study areas that interest you most, chat to the college Careers and Employability Team as well as our Student Experience Team and Learning Support tutors. They provide a great opportunity to have all your questions answered and to take a tour of our campuses and explore our excellent facilities too. See www.hopwood.ac.uk/news-and-events/open-events to keep up to date with all new events.

4. Go online and explore 'PATHWAYS'

Our website is full of information about what to expect at college as well as detailed course information. It also houses 'Pathways', our fantastic careers tool, within each course entry. This enables you to easily explore the career opportunities that each course can lead to.

It's a great way of investigating your career choices. It gives you a clear picture of what each job involves and the salary you can expect to earn, qualifications and experience you will need to enter and progress. It provides real insights - not just statistics and numbers - including over 800 videos of real people talking about their real jobs. It also links with live job vacancies for each occupation allowing you to make a very informed course choice.

5. Follow us on our social media channels

Keep up to date with what's happening in our college community on:





Where will your course take you next?

Once you've started your journey with us you'll get help with advice and information every step of the way including when choosing your next steps after college.

There are plenty of exciting options to choose from. You could progress on to another course or Apprenticeship or even study at university level at the College. Alternatively, you might choose to apply to university or find a job. Whatever your choice is, we will give you support to make the decision that's right for you.

With courses available from Entry Level to University Level, we have a wide choice of progression opportunities to help you move from one level to the next.

Also, our excellent industry links, extracurricular opportunities and high-quality facilities and resources give you the knowledge and experiences which will make you stand out from the crowd at interview.

Talk to us

Whilst at College you can visit our Careers and Employability Team at each campus where you can access the information and advice you'll need to help you make informed decisions about your future - there are always plenty of opportunities to obtain personal advice and guidance.

You will also get plenty of career support at college with information on how to write a personal statement, how to apply to university, find a job or Apprenticeship, take a gap year and more. Whatever help you need to plan your future, the Careers and Employability Team are always here to support you.

A close-up, profile view of a woman with brown hair, wearing clear safety glasses and a white lab coat. She is looking down and slightly to the left. The background is blurred, suggesting a laboratory or industrial setting.

T-LEVELS

THE NEXT LEVEL QUALIFICATION



Lets Talk T-Levels

T-Levels were described as the biggest overhaul in post-school education for 70 years.

Hopwood Hall College was selected to introduce T-Levels from September 2021. These pioneering programmes offer a brilliant opportunity for school leavers.

T-Levels are shaped by employers and benefit from the unique insights of industry leaders. This means learners are equipped with the skills and knowledge they need to get a head start in industry.

What is a T-Level?

- Delivered over a two-year period, T-Levels provide an excellent alternative to A-Levels and are aimed at 16 to 19-year-olds who would rather study work-related courses than traditional academic subjects.
- **They counter the long-held assumption that only A-Levels can lead to a degree and a fulfilling job. It's worth noting that as a T-Level student you will still be able to progress to university or higher-level technical qualifications.**
- T-Levels have been created by national panels made up of expert employers. They are designed to deliver the necessary skills required to strengthen and grow the UK economy.
- T-Levels provide a mix of industry-specific technical knowledge and practical skills; relevant maths, English and digital skills as well as a work placement of at least 45 days.
- These two-year, level 3 technical education courses follow GCSEs and have revolutionised technical education in the UK. Developed in close collaboration with employers, this means that content directly meets the needs of industry and prepares students for work or university.
- T-Levels are ideal if you have finished your GCSEs and want the knowledge and experience to give your career a head start and get straight into employment, a higher apprenticeship or higher education.

T-Levels components include:

- Employability skills
- Numeracy
- Literacy and digital skills
- Concepts and theories
- Occupational specialisms.
- As an integral part of the T-Level, learners complete a minimum of 315 hours (approximately 45 days) in an industry placement, where your focus will be on developing practical and technical skills. The placement will be with an employer in a real life working environment. You'll spend 80% of your time in the classroom and 20% on industry placement giving you the chance to experience a real workplace setting while continuing your studies.

T-Level Industry Partners

We work with a wide range of excellent employer partners for our T Level placements including:

- The Willows (Rochdale) Ltd
- Voktis
- Building Engineering Solutions Ltd (BES)
- Rakem Limited
- Willmott Dixon Construction
- Seddon Construction Ltd
- Wates Group Services Ltd
- Northern Care Alliance
- HMG Paints Limited
- Tiddlywinks Nursery Group
- Seeros Daycare Nursery
- Sunflower Nurseries
- Teddy Bears Nursery
- Bright Stars Childcare
- Creche n Co Ltd
- Rakem
- Springhill Hospice
- Rochdale AFC...and many more!

Industry Placements

High quality industry placements are an integral part of each of our T-Level programmes. Industry placements are a crucially important part of your T-Level which will enable you to develop the valuable skills needed to progress onto employment.

Your Industry placement will be a minimum of 315 hours (approximately 45 days). Placements may be undertaken as a block, over college holidays for example, or as individual days. This arrangement depends on what works best for you and for our industry partners.

Industry placements give you the opportunity to develop your practical and technical skills in a role directly relevant to your vocational course. They also give employers the chance to ensure that their new generation of employees are developing precisely the skills and experience that industry needs.

Which T-Level pathways are offered at Hopwood Hall College?

These subject areas have been specially selected not only to offer a wide variety of choice to our students but also to align with the skills areas in highest demand across Greater Manchester and the wider North West region.

Accounting - Assistant Accountant

Entry requirements: 5 GCSEs grade C/4 or above to include English and Maths

Animal Care and Management

Entry requirements: 5 GCSEs grade 5 or above to include English, Maths and Science.

Building Services Engineering for Construction - Electrotechnical

Entry requirements: 5 x GCSEs at grade 4 or above including Maths, English and Science, however Maths must be at grade 5 or above

Design Surveying and Planning - Surveying and Design for Construction

Entry requirements: 4 GCSEs grade C/5 or above to include English and Maths

Design and Development - Mechanical

Entry requirements: 4 GCSEs grade C/5 or above to include English and Maths

Maintenance and Installation - Mechanical

Entry requirements: 4 GCSEs grade C/5 or above to include English and Maths

Education and Early Years - Early Years Educator

Entry requirements: 5 GCSEs grade C/4 or above to include English and Maths

Education and Early Years - Assisting Teaching

Entry requirements: 5 GCSEs grade C/4 or above to include English and Maths

Health - Adult Nursing

Entry requirements: 4 GCSEs grade C/4 or above to include English and Maths

Health - Mental Health Team

Entry requirements: 4 GCSEs grade C/4 or above to include English and Maths

Science - Laboratory Science

Entry requirements: 4 GCSEs grade C/5 or above to include English, Maths and Science

Management and Administration - Team Leadership and Management

Entry requirements: 4 GCSEs grade C/4 or above to include English and Mathematics. BTEC Level 2, NVQ Level 2 or VRQ Level 2 qualifications are also accepted.

Digital Support Services

Entry requirements: 5 x GCSEs at grade 4 or above including Maths and English, however Maths must be at grade 5 or above

Production, Design and Development

Entry requirements: 5 GCSEs grade C/4 or above to include English and Maths

What will a T-Level be worth?

Your T-Level will be worth UCAS points, for example a T-Level Distinction* is worth exactly the same as 3 A-Levels at A*.

Will Universities accept students who have a T-Level?

Yes they will.

T-Levels are recognised by universities including our own University Centre so you can choose to continue studying on a wide range of degree programmes after successfully completing your T-Level if you wish. Other options include taking further technical training such as Higher Apprenticeship if you don't want to move straight into a job.



I feel so proud of myself – studying a T-Level is a big achievement! The other students in the class are so welcoming and the tutors really recognise you as an individual.

Ludnela Andrade, T-Level Design, Surveying & Planning

UCAS Tariff points	T Level overall grade
168	Distinction*
144	Distinction
120	Merit
96	Pass (C or above on the core)
72	Pass (D or E on the core)

Is a T-Level right for you?

T-Levels are right for you if you are progressing from your GCSE studies and want to develop the right skills to obtain a qualification that's directly linked to your future career choice.

If you are considering a T-Level then you need to be the kind of person who enjoys a practical approach to study and is ready to take the next steps toward employment.

You need to be ready to commit to a programme that equips you with the essential skills to get you industry-ready. T-Levels are all about boosting your employability and kick-starting your career in the industry of your choice.

T-Levels have felt very fresh and exciting! I've made some great new friends along the way and the tutors have been so supportive.

"The best part is that the course is so varied. The practical elements mean that you're rarely sat down – we're always out doing stuff.

Imogen Tudor, T-Level Supporting Adult Nursing



T-Level Foundation Year

T-Level Foundation Years have been specially developed to get you where you want to be, opening you up to new possibilities and unlocking your route to T-Level success

If you haven't quite achieved the grades for your preferred T Level pathway then the option of a T level Foundation year could be perfect for you. The T level Foundation year programmes are designed for students who want to do a T-Level but are not quite ready.

We offer eight routes, however these routes do not appear as stand-alone courses that you can apply for online, instead applicants will be enrolled onto the T-Level route of their choice and if you start at a lower entry point then you will complete the one year foundation before completing the two year main T-Level programme depending on your GCSE results.

For those who do meet the T-Level entry requirements from the outset then it will be a two year T-Level journey whereas for those that have a lower starting point it will be a three year T-Level journey in total.

T-Level foundation year programmes are provided on the following routes:

- Accounting
- Business and Administration
- Construction and the Built Environment
- Digital
- Education & Early Years
- Engineering & Manufacturing
- Health & Science

The T Level foundation year programme will offer a relevant level 3 qualification, English and Maths for those yet to achieve the T-Level entry requirement, industry relevant work experience and a tailored curriculum that will ensure you are ready and confident to succeed on your chosen T-Level pathway.

If, after your interview, we consider you are ready for the T level then we will let you know and you can decide the best starting point for your exciting career ahead.

T-LEVELS

ALUMNI SUCCESS

STEP UP
TO THE
NEXT LEVEL



Ben Hamlin

Studied: T-Level in Design, Surveying and Planning for Construction

School: St Anne's Academy

Now: Building Services degree apprentice at BES Ltd



*Molly
Scott
Smith*

Studied: T-Level in
Education & Childcare

School: Matthew Moss
High School

Now: Studying Primary
Education at York St
John University



*Nathan
Ashurst*

Studied: T-Level
Education & Childcare

School: Falinge Park
High School

Now: Apprentice
Disability Football
Coach at Rochdale AFC
Community Trust



*Bailey
Bradshaw*

Studied: T-Level in
Digital

School: Holy Family RC
& CE College

Now: Studying Ethical
Hacking at Abertay
University

We are very proud of all our students and former students. So many of our alumni have gone on to bright futures. We believe that coming to Hopwood Hall College is just the start of what is an enduring connection to our very special college.



Dylan Shann

Studied: Travel and Tourism

School: Oasis Academy
Oldham

Now: Cabin Crew at EasyJet

*"I wouldn't be where I
am today without the
wonderful tutors at
Hopwood."*

*"It was a very uplifting
environment!"*



Muhammad Qasim Ali

Studied: Electrical and Electronic
Engineering

Now: Studying Electronic
Engineering at the University of
Manchester

*"The best part of the
whole experience was
the tutors and the
learning environment. If
you need support, you'll
always get it from your
tutors"*



Rossi Newton

Studied: Mechanical Engineering

School: Hollingworth Academy

Now: Machine Apprentice at Ken Mills Engineering

"Hopwood had the best facilities out of all the colleges I looked at. You'll more than likely end up enjoying your time at the college"



Rebecca Marson

Studied: Education & Childcare

Now: Norland Nanny at Norland College

"The tutors wanted the best for me. They were always there for me when I needed advice"



Aram Shabeer

Studied: Plumbing

School: Oulder Hill Leadership Academy

"The teachers are very good and they always encourage you to keep trying until you've learned to do something the correct way"



James Bennett

Studied: Creative Media Practice
School: Cardinal Langley RC High School

Now: Studying Filmmaking at Screen and Film School, Manchester

"On my course everyone was really like-minded but also had their own vision - I have made lifelong friends!"



Emily Mills

Studied: Animal Management

School: Crompton House

Now: Studying HND Animal Management at Hopwood Hall College and University Centre

"I always wanted to go to Hopwood Hall and I'll remember the experience forever!"



Holly Maclean

Studied: Make-up Artistry

School: Hollingworth Academy

Now: Studying Special Effects Make-up for TV and Film

"I loved the course! If you live for the creative side of things, this course is definitely for you"



Rosie Taylor

Studied: Beauty Therapy
School: Todmorden High School
Now: Self-employed Beauty Therapist

"You get a great opportunity to gain salon experience at Hopwood, meaning when you leave college you're well prepared to work in the industry"



Bridie Hardaker

Studied: Engineering
School: Whitworth High School
Now: Engineering Apprentice with BEP Surface Technologies Limited

"My course allowed me to gain sought-after skills from such a reputable place - and it's made me so positive for the future"



Aleksander Perkins

Studied: Media Practice
School: North Chadderton School

"The course arms you with such valuable technical skills and you really get to apply this knowledge"

STUDENT EXPERIENCE

Your college experience is about so much more than what you learn in the classroom!

There's lots more to life at Hopwood Hall College than simply studying. Here your student experience really matters and that's why your time here is about so much more than what you learn in the classroom.

While success on your course is our priority, we recognise that there are so many ways that we can help you stand out from the crowd and shine. That's why we offer a whole range of enrichment opportunities for you to experience alongside your course.

Enrichment at Hopwood - Helping you make the most of every moment

We understand that when it comes to enrichment it's never a case of 'one size fits all' which is why we offer a lively programme of activities for you to enjoy with something to suit all learner styles, personalities and interests. It's a great way to:

- Make new friends
- Develop your skills
- Grow your confidence
- Bring your CV to life
- Experience something new
- Indulge your passions

Our enrichment programme will enhance your core study programme and help you to enjoy, achieve and make a positive contribution to life at college.

Whether you get involved in one of our clubs or become a Student Ambassador, you can be sure that there will be plenty of opportunities to develop your confidence and knowledge in a safe and enjoyable environment.

Read more at www.hopwood.ac.uk/college-life/student-experience-hub

Here's a taste of what you can look forward to:

National Citizen Service (NCS) - We work with NCS, delivering life-changing experiences that help you to realise your potential, smash your future goals and get involved in lots of fun activities! On NCS, you'll get a taste for independence, mix with a new crowd and take on exciting challenges together.

It's a great way of developing skills that will set you up for life after college. NCS is dedicated to providing a platform for young people where you can speak up, get your voice heard and tackle real-world issues close to home. If you would like to find out more head over to www.wearencs.com

DUKE OF EDINBURGH AWARD: We are proud to be a licensed organisation who provide this all-important accolade which is designed to develop your leadership, teamwork, communication, self-motivation, confidence and consideration skills.

It's a brilliant opportunity for our students, one which is held in high esteem by employers and universities alike. If you've got your sights set on landing your dream job or progressing to University then this award could be the perfect stepping stone!



Masterclasses – Designed to help boost your employability skills and held throughout the year, these sessions are perfect for helping to boost your confidence and your job chances too.

External Speakers – These informative sessions run throughout the year and provide the perfect opportunity for you to network with our industry partners – it could even be where you meet your future employer!

World Skills Competitions – WorldSkills competitions are the gold standard of skills excellence. They inspire young competitors to reach new heights, helping you to turn your passion into a profession.



You'll have the opportunity to showcase your skills on the world stage as well as competing across the region in the Greater Manchester Skills competition.

ECOFEST – Our whole community takes part in our annual celebration of sustainability which features a whole range of exciting, green-focused events and activities across both campuses. EcoFest is designed to empower and inspire everyone in Team Hopwood to visualise a better and more sustainable future and discover how you can play your part in tackling the climate crisis.



Educational visits and residential trips – Whatever you study you can look forward to a wide range of visits and trips whether that be expeditions across the Peak District as a Public Services student or taking part in an international football tournament in Eindhoven as a Football Academy student.



Clubs & Societies - Whether you choose to join our Conservation & Sustainability Initiative (CSI), our LGBTQ+ group or any of our cross college clubs and groups you are sure to meet like-minded people and have fun!

- **British Sign Language classes** - BSL classes at Hopwood help you to develop a great skill which is perfect if you want to help break down barriers to communication and help make society more inclusive. Once you master the basics you'll be able to start communicating with lots of new people!
- **Community fundraising opportunities** - You will have the opportunity to help raise much needed funds for our Charity of the Year
- **Volunteering opportunities** - You will have lots of opportunities to volunteer and really get involved in events such as our Community Fun Day.
- **Woodland Experience Sessions** - A great opportunity for you to get back to nature in our unique woodland setting at our Middleton campus, enjoy campfire cooking and experience the Great Outdoors.
- **Talent showcase competitions** - We run regular talent competitions that give you the perfect opportunity to show off your extra-curricular talents and really shine!
- **Free gym membership!** - You'll have free access to a fantastic range of equipment at the Middleton campus Sports Arena and Gym as well as a packed timetable of free fitness classes. Enjoy everything from Metafit to Samba, yoga and meditation.
- **Sports: Basketball, rugby and football teams** are open for students from any study area to join. As well as enjoying football matches on our 4G pitches, you can also try your hand at dodgeball, Futsal, Volta, table tennis and much more!

At Hopwood we believe that a healthy mind and a healthy body go hand in hand. Dipping into the vast range of sport and exercise opportunities available to you is a great way to maintain your well-being and boost your energy levels, ensuring that you make the most of every moment of your time at Hopwood.











You don't
have to be
noisy
for your voice
to be heard

Learner Voice: It's your college, your voice is important to us.

When it comes to Learner Voice, Hopwood Hall is a place where you don't have to be noisy for your voice to be heard.

We encourage you to find your voice and have your say at every opportunity. We value your feedback and do our best to listen and respond to what you say.

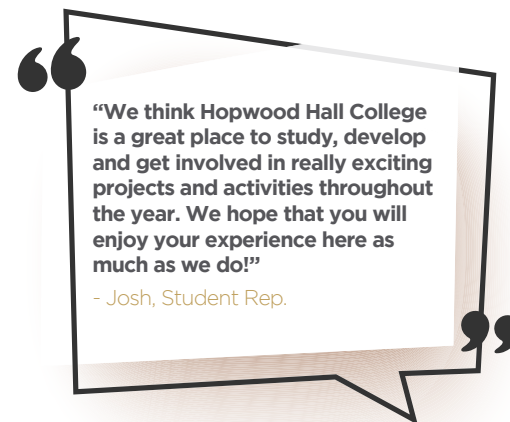
We give you a voice through:

- Tutorials
- Principal's Question Time
- Student Surveys
- The Learner Voice Conference
- Learner engagement activities such as focus weeks
- Student representation on key college forums e.g. Equality & Diversity Group, Sustainability Group
- Representation on local and national Learner Voice panels
- Being elected as a Student Governor

- Joining our Student Representatives – Our Student Representatives actively help make the College the best place to be and represent the views of all students. Student Representatives do lots of things, from collecting learner feedback and representing learner views to running events about issues that are important to students.

Our Student Representatives come from each curriculum area across both campuses and work with senior managers as well as with external agencies in the community.

Each Student Representative has specific responsibilities for an area within the College. Their main role is to represent the voice of students and to provide a support mechanism for other learners.



Our Student Representatives are here for you and work to help improve the College for all future students.

Your Student Support Services:

HOW WE HELP YOU TO FEEL SAFE AND SUPPORTED

At Hopwood we put your wellbeing and safety first. We have a dedicated **Pastoral, Welfare and Safeguarding Team** who work closely with tutors and students to keep you safe and ensure that you have the very best experience and really get the most out of your time at college. It's their job to make sure you are kept safe from abuse or neglect or harm of any sort.

The team helps to create a safe and inclusive environment where all your needs are supported. The team is made up of specialist staff who are dedicated to supporting you with all kinds of pastoral, social and welfare issues as well as with counselling and keeping you safe. They are here to ensure that all our students can access and fully participate in college life.

The team supports your progress, performance and personal development. They will help you to make the most of your time at college by giving you support, guidance and lots of encouragement along the way.

They provide advice, information and guidance on anything that may be concerning you or affecting your learning or personal life. **No question is too small and no problem too big, confidential advice and support is what they do best.** Learners can access the Hub any time at either campus and speak to a member of the team.

You can read more about welfare and safeguarding at www.hopwood.ac.uk/college-life/safeguarding-welfare

HOW WE HELP YOU TO PROGRESS

Your Progress Tutor - Whilst studying at Hopwood Hall College you'll have regular Progress Tutorials delivered by your dedicated Progress Tutor (PT). Your PT will be the linchpin between your studies and the wider college support network. Each week your PT will deliver a Progress Tutorial and will facilitate 1-to-1 progress review sessions to ensure your progress and keep you on track for success.

They will motivate and support you and help you to develop your personal, social, academic and employability skills. Your PT will help to guide you through your choices and options for the future too, helping to bring out the best in you throughout your Hopwood Hall journey.





iLearn Centre

The iLearn Centres at both campuses of Hopwood Hall College are a hub for all your IT, academic support, and personal development needs.

Our iLearn Centres give you the space, flexibility and equipment you need to continue your learning independently outside of the classroom.

There is plenty of space for you to study with a wide range of resources available including books, eBooks, journals, online resources, computer bays for independent study, tables for group work, and a quiet work space available.

Our friendly and approachable staff are here to help and guide you through your studies. They are able to assist you with solving any difficulties you may have with your log-ins, using the computers, the Hopwood Life app, and ItsLearning.

They will also guide you to access the resources available, help you to find material for your assignments, and assist with referencing and other academic skills needed for you to successfully complete your studies.

Our facilities include:

- **Independent Study Zones** – Use the IT facilities in your free time to catch up on your studies
- **Directed Study Time Lessons** – 3 timetabled lesson bays
- **Workshops** – A variety of life and study skills sessions will be scheduled throughout the year
- **Library Book Loans** – Borrow up to 8 Books for 3 weeks
- **ItsLearning Student Hub** – Multiple online resources available via the iLearn Centre page
- **Quiet Work Space** – Smaller room, if you struggle to study in a busy environment
- **Printing Facilities** – Colour printer available to both staff and students

- **Technical Support and Advice** – iLearn Centre staff will help with accessing timetables, password resets, log-in problems, and software guidance.

We have an exciting new independent study space for our Level 3 learners, at both campuses.

Middleton campus – The LOFT (LEARNING | OPPORTUNITIES | FUTURES | TECHNOLOGY)

Rochdale campus – The COVE (CAREERS | OPPORTUNITIES | VISION | EMPLOYABILITY)

Here learners can work in the way that best suits them to complete their FAST programme, develop their study skills, and become truly independent learners.





ADDITIONAL LEARNING SUPPORT

The Learning Support team at Hopwood Hall College are here to help you if you have a learning difficulty, disability or any other learning support needs. The team offer a responsive support service and tailor support to make sure that it meets your individual needs. Our team is always on hand to help you reach your potential and help you make the best start to college life possible.

They provide invaluable assistance to learners who have specific support requirements, such as:

- Learning difficulties and/or disabilities
- Blind and partially sighted learners
- Deaf learners and those with hearing impairments
- Learners with a physical disability or mobility needs
- Medical conditions
- Social Emotional Behavioural Difficulties (SEBD)

We advise that you take up the opportunity to talk to a member of our Learning Support Team when you visit any of our school leaver open events so that we can be sure to offer you the support you need at the start of your journey.

Please also let us know on your application form if you have any specific needs so that we can ensure a member of the team is present at your interview to help plan your support.

You can read more about our full range of additional learning support services at www.hopwood.ac.uk/college-life/additional-learning-support



EQUALITY, DIVERSITY AND INCLUSION

Hopwood Hall College celebrates equality and diversity irrespective of age, sex, disability, race, sexual orientation, religion or belief, gender identity and social economic background.

We seek to ensure that no member of the College community receives less favourable treatment on any of these grounds. Equal opportunities are available to every student at Hopwood Hall.

Read more about Equality, Diversity and inclusion at Hopwood here:
www.hopwood.ac.uk/about/equality-diversity-inclusion



CAREERS & EMPLOYABILITY SUPPORT, ADVICE & GUIDANCE

Our Careers & Employability Team is always on hand on campus to ensure you have all the information, advice and guidance you need to make the right choices about your future. This could be applying for university, an Apprenticeship or starting a career. They can help you with:

- Choosing the right programme to match your skills and abilities
- Researching Higher Education courses and preparing your UCAS application
- Preparing for interviews for Higher Education and employment
- Job searching, CV writing and job application support
- Advice on volunteering opportunities to boost employability

WORK PLACEMENTS

We are committed to developing your employability skills through a range of college-led activities including work experience. This work experience will vary from course to course, typically you will undertake a placement for at least one week during the academic year. (NB: For T-Levels this will be a 45 day placement). Work experience can also take place on study days, during college holidays or as part of your course timetable.

Our dedicated team of Careers & Employability Officers will work with you to prepare you for the world of work and for your next steps after college. Be sure to check out our careers and employability page at www.hopwood.ac.uk/college-life/careers-employability-advice

Money Matters:

FINANCE AND FEES

College course fees are made up of several elements including tuition fees and exam fees and the cost depends on your age, existing qualifications and personal circumstances.

SCHOOL LEAVERS: As a 16 year old school leaver you qualify for free tuition so you won't be charged any fees during your course.

MATURE STUDENTS: If you are reading this as a parent and you're considering returning to education as a mature student then it's worth noting that we are currently offering a selection of **FREE Level 3 qualifications** to help adults retrain and develop the skills that are in most demand in the economy.

Now is a great time to add to your skills, retrain and land that perfect job to boost your earnings potential and get you back on track. Check out the full range of fully funded courses and adult learning opportunities at: www.hopwood.ac.uk/adult-learners

NB. Some of our courses may not be fully funded, however they can be paid for using an Advanced Learner Loan. Our advisors can help you submit your application and explain how it works, but essentially you won't start making repayments until you are earning above a specific earnings threshold set by the government.

For full details of the funding support available please visit www.gov.uk/advanced-learner-loan or speak to our Student & College Services Team on 0161 643 7560

FINANCIAL SUPPORT

At Hopwood Hall College, we pride ourselves on giving students the best financial support around. From a **free breakfast to free college bus services**, you can be confident that you are joining a college that really cares about you and your financial needs. We think that everyone has the right to further education and training and we are committed to supporting learners to achieve their full potential. Wherever possible we offer additional financial support to help students who are experiencing hardship with costs associated with college.

We have a number of financial support packages available, funded by the Government, that are designed to assist students who are experiencing financial hardship. The funds are provided to enable you to participate and remain in education. They can assist with course costs such as travel, equipment, childcare and lunch.

Please visit the financial support page on our website for detailed information on the financial support available as well as access to our bursary application form: www.hopwood.ac.uk/college-life/financial-support

Alternatively you can speak to our Student & College Services Team on 0161 643 7560.

UNIFORM & KIT ORDERS

The team can also help with making purchases of uniform or kit. You can read more about this and access the uniform order forms at www.hopwood.ac.uk/college-life/uniform-kit-shop



Parents/carers:

At Hopwood Hall College the safety and wellbeing of learners is our key priority. We believe that by working in partnership with parents and carers we have the best opportunity to support the personal development and success of each of our learners.

Parents or carers are kept informed of your progress through parents' evenings. We also have an **online Parent Portal** that is accessible 24/7 to help keep track of a student's progress while studying with us.

We know that keeping up to date with your young person's progress matters. We make this easy for you.

As a parent/carer of a young person attending Hopwood Hall College you will have access to ProPortal, an interactive online service you can use to review your young person's progress at college and giving you access to a Notice Board with key updates all at your fingertips.

It's easy to register and gives you immediate access to key information such as:

- Learner details
- Progress reports
- Attendance & punctuality summary
- Dates, times and notes of meetings arranged between learners and staff
- Timetable information
- Information about your young person's preferred progression for the next year

Register online at:

<https://portal.hopwood.ac.uk>

When prompted, add the personalised learner reference (Learner ID) which can be found on your young person's ID card once they have enrolled.





Riverside Salon at Hopwood Hall College is a contemporary hair & beauty salon offering hairdressing, beauty therapy, complementary therapy and nail treatments.

Affordable prices, quality service.

Whether it's a manicure, facial or new hairstyle you want, come and be pampered in style. Professional retail lines also on sale at discounted prices.

Rochdale Campus, St. Mary's Gate, Rochdale OL12 6RY

t. 01706 751 106

e. riversidesalon@hopwood.ac.uk

www.hopwood.ac.uk/public-facilities/riverside-salon/

Hopwood Hall College Sports Arena

www.hopwood.ac.uk 0161 653 2070



Gym membership is **FREE** for all full-time Hopwood Hall students

- Free weights
- Cardio equipment
- TRX machines
- Resistance machines
- Dance studio
- Fitness classes
- Personal training
- Available 7 days a week
- Free parking

Middleton Campus, Rochdale Road, M24 6XH

HOW TO FIND US



Middleton Campus

Rochdale Road, Middleton, M24 6XH, t. 0161 643 7560

Free College Bus Service

The college operates 9 FREE bus service routes - check out the full timetable on our website.

Also, the number 17 bus runs regularly between Manchester and Rochdale stopping at the top of the drive at Middleton Campus.

Car

The Middleton Campus is two miles from junction 20, M62. Take the A627(M) towards Oldham and leave at first junction and follow signs to Middleton.

Rail

Castleton train station is two miles from the Middleton Campus and there are regular buses to Middleton or Manchester that take ten minutes to reach the Middleton Campus.



Rochdale Campus

St. Mary's Gate, Rochdale, OL12 6RY, t. 01706 345346

Free College Bus Service

The college operates 9 FREE bus service routes - check out the full timetable on our website..

In addition, frequent public buses travel to Rochdale Interchange in the town centre. The Rochdale Campus is a five minute walk from the transport interchange.

Car

The Rochdale Campus is three miles from junction 20, M62. Follow signs to Rochdale town centre.

Rail

Rochdale train station, with frequent connections to Leeds, Bradford and Manchester, is a ten minute walk from the Rochdale Campus through the town centre.

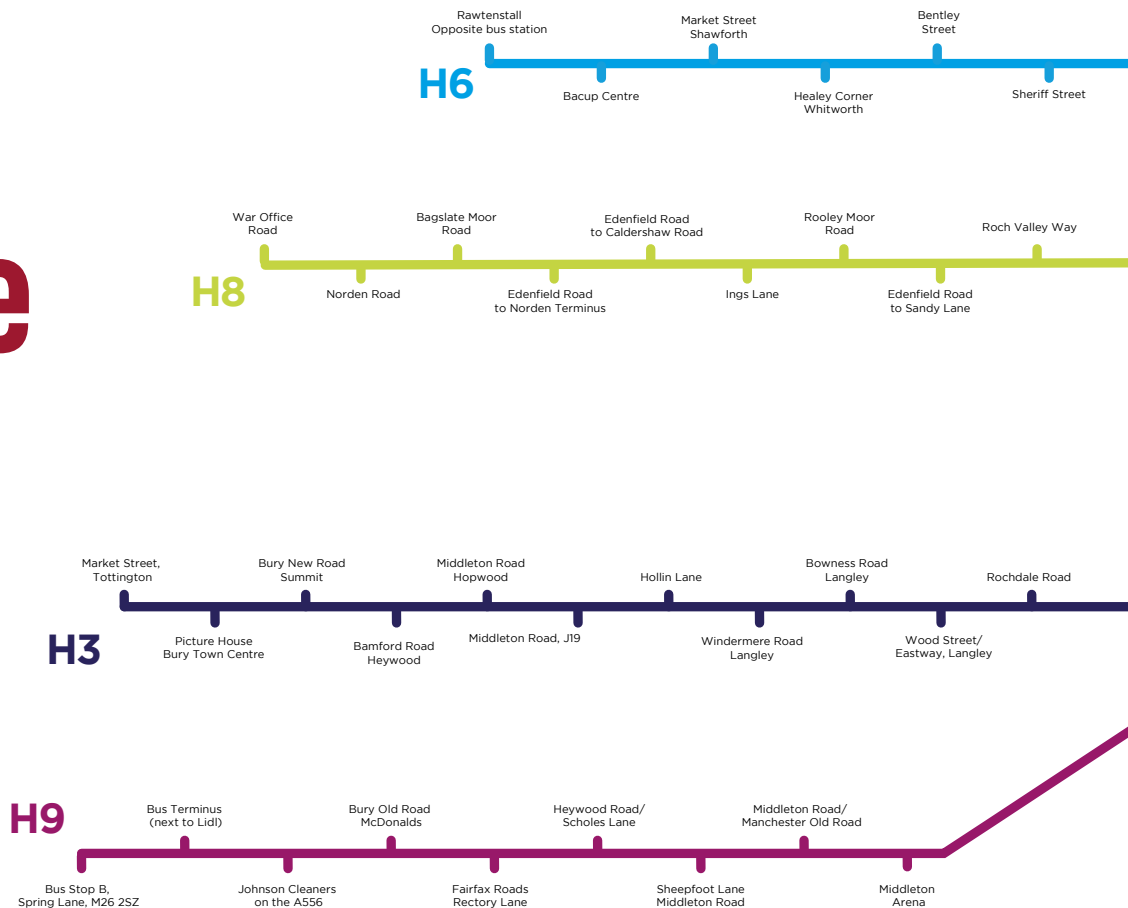
Metrolink

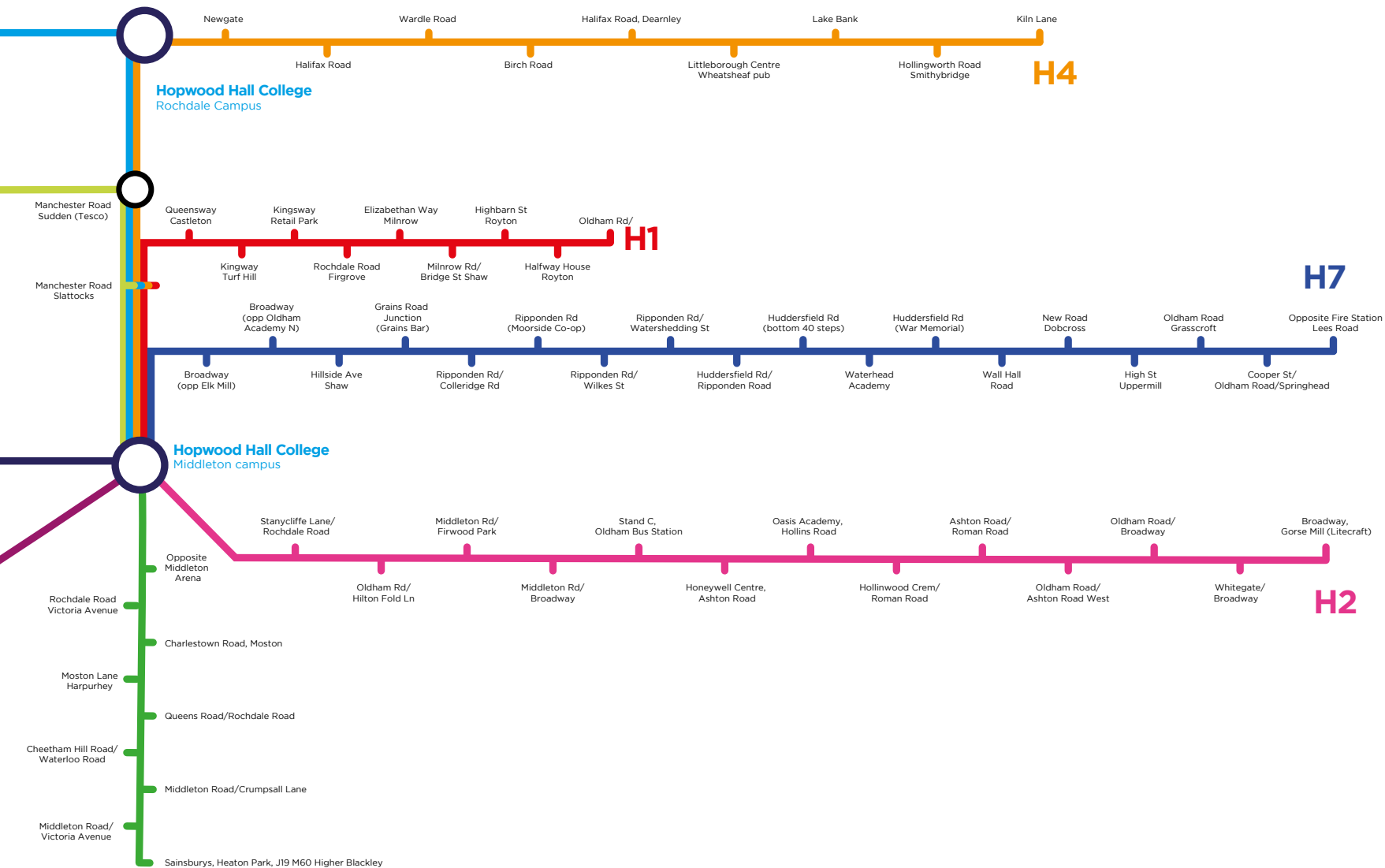
Trams run into the Rochdale Interchange in the town centre, a five minute walk from the campus.

Check out the full timetable at www.hopwood.ac.uk/college-life/travelling-to-our-campuses

Getting you where you need to be:

FREE College bus routes





Free College bus timetable to Middleton and Rochdale campuses

H1 FROM OLDHAM

Bus stop, Oldham Road, Rochdale	07:43
OL16 4RH (opposite car wash)	
Halfway House, Royton	07:45
Highbarn St Royton	07:53
Milnrow Rd/Bridge St Shaw	08:00
Elizabethan Way Milnrow	08:07
Rochdale Road Firgrove	08:08
Kingsway Retail Park	08:15
Kingsway Turf Hill	08:20
Queensway Castleton	08:25
Middleton Campus	08:35

H4 FROM MILNROW

Kiln Lane, opposite Tim Bobbin	07:45
OL16 3LH	
Hollingworth Road,	07:50
Smithybridge, Lake Bank	07:52
Littleborough Centre, (Wheatsheaf Pub)	07:55
Halifax Road, Dearnley	08:00
Birch Road	08:05
Wardle Road	08:10
Halifax Road	08:15
Newgate (Rochdale Campus)	08:20
Manchester Road, Sudden	08:25
Manchester Road, Slattocks	08:30
Middleton Campus	08:35

H2 FROM BROADWAY

Broadway, Gorse Mill	07:25
(Opposite Litecraft) OL9 9RJ	
Whitegate, Broadway	07:30
Oldham Road/Broadway	07:35
Oldham Road/Ashton Road West	07:38
Ashton Road West/Roman Road	07:40
Hollinwood Crem/Roman Road	07:43
Oasis Academy, Hollins Road	07:46
Honeywell Centre, Ashton Road	07:48
Stand C, Oldham Bus Station	08:00
Middleton Road/Broadway	08:05
Middleton Road/Firwood Park	08:08
Oldham Road/Hilton Fold Lane	08:10
Stannycliffe Lane/ Rochdale Road	08:15
Middleton Campus	08:17

H5 FROM BLACKLEY

Heaton Park, J19 M60, Sainsburys	07:45
Higher Blackley M9 OQ5	
Middleton Rd/Victoria Ave	07:47
Middleton Rd/Crumpsall Lane	07:50
Cheetham Hill Rd/Waterloo Rd	07:54
Queens Rd/Rochdale Rd	08:00
Moston Lane, Harpurhey	08:02
Charlestown Road, Moston	08:10
Rochdale Rd/Victoria Ave	08:20
Opposite Middleton Arena	08:23
Middleton Campus	08:28

H3 FROM BURY

Bus Terminus, Market Street, Tottington, Next Door Restaurant, BL8 3LL	07:30
Wetherspoons Art Picture House	07:45
Bury New Road, Summit	07:55
Dawson Street, Heywood	07:59
Middleton Road, Hopwood	08:01
Hollin Lane	08:05
Windermere Road, Langley	08:07
Bowness Road, Langley	08:13
Wood Street/Eastway, Langley	08:15
Rochdale Road	08:21
Middleton Campus	08:26

H6 FROM RAWTENSTALL

Cricket Ground, Rawtenstall	07:25
BB4 7NQ	
Bacup Centre	07:33
Market Street, Shawforth	07:40
Healey Corner, Shawclough Rd	07:50
Bentley Street, Shawclough	07:52
Sheriff Street	08:00
Newgate (Rochdale Campus)	08:10
Sudden (Tesco)	08:15
Castleton, Manchester Rd/ Miln St	08:20
Middleton Campus	08:30

RETURN JOURNEY

All buses depart from Middleton Campus Monday - Friday just after 4pm. PLEASE NOTE: Bus times for timing guidance - the bus will depart from the bus stops at the times detailed. YOU MAY REQUEST THE BUS TO STOP AT ANY BUS STOP ALONG THE ROUTE.

Information correct at time of printing.

Free College bus timetable to Middleton and Rochdale campuses

H7 FROM SADDLEWORTH

Bus stop HSS Hire Lees Rd, Oldham OL4 1JW	07:20
Cooper St/Oldham Rd, Springhead	07:25
Oldham Road, Grasscroft	07:29
High St, Uppermill.	07:35
New Road, Dobcross	07:37
Top Wall Hill, Road	07:39
Huddersfield Rd, Austerlands. (war memorial)	07:45
Waterhead Academy	07:47
Huddersfield Rd / Ripponden Rd Junction	07:50
Ripponden Road (Moorside Co-op)	07:58
Grains Road (Junction) Grains Bar	08:02
Hillside Ave, Shaw. (opposite bus terminus)	08:05
Rochdale Road (opposite Crompton House)	08:10
Rochdale Road (Car Sales. opposite Junction Inn)	08:13
Broadway (opposite Oldham Academy North)	08:18
Broadway (opposite Elk Mill)	08:20
Middleton Campus.	08:35

H8 FROM NORDEN

War Office Road (Premier Shop). OL11 5HW	07:55
Norden Road	07:56
Bagslate Moor Road.	07:57
Edenfield Road, Terminus	08:03
Caldershaw Road	08:08
Ings Lane	08:10
Phoenix Street.	08:11
Edenfield Road / Sandy Lane	08:16
Roch Valley Way	08:20
Manchester Road, Sudden (Tesco)	08:25
Manchester Road, Slattocks	08:30
Middleton Campus.	08:32

H9 FROM RADCLIFFE

Bus Stop B, Spring Lane (Under Bridge outside Metrolink, M26 2SZ)	07:30
Bus Terminus (next to Lidl opposite Asda)	07:36
Johnson Cleaners on the A556 (opposite The Goats gates Pub)	07:41
Bury Old Road McDonald's. (Next to Aldi)	07:46
Fairfax Roads/Rectory Lane.	07:52
Heywood Road/Scholes Lane	07:57
Sheepfoot Lane/Middleton Road	08:04
Middleton Road/ Manchester Old Road	08:07
Manchester Old Road (Aldi).	08:12
Middleton Arena	08:15
Middleton Campus.	08:30

RETURN JOURNEY

All buses depart from Middleton Campus Monday - Friday just after 4pm. PLEASE NOTE: Bus times for timing guidance - the bus will depart from the bus stops at the times detailed. **YOU MAY REQUEST THE BUS TO STOP AT ANY BUS STOP ALONG THE ROUTE.**
Information correct at time of printing.



Your journey starts here

Our Pass is a membership scheme for young people who live in Greater Manchester, and supports both school leavers and care leavers. Those eligible have the chance to become a member – and potentially enjoy two things:

First, free bus travel across Greater Manchester. For a one-off £10 fee, members can travel on most local buses, any day of the week, for free. No hassle, no fuss, no tickets: just a card that will get you where you want to go. Members can also get half-price off-peak 1 day and weekend travelcards on Metrolink.

Second, membership unlocks exclusive offers and experiences: discounts, special offers, free tickets, swimming and leisure passes, merchandise, taster sessions and much more.

Our Pass exclusives

Our Pass members get exclusive access to offers, events, discounts and experiences, from tickets to tasters, discounts and swimming and leisure passes. Our Pass exclusives are only open to our members – look out for the exclusives label across the site, or find out what exclusives are live on the site now.

Alongside, you'll also find listings for other events on our website that we think you might like; these events are open to anyone and, as we're not responsible for these events, members should check individual organisation websites for full details before heading to a venue or event.

Find out more at www.ourpass.co.uk

A brighter future is closer than you think



www.hopwood.ac.uk



Over 500

...animals call
Hopwood Hall home
From wallabies and flamingos to
meerkats and potoroos, our Animal
Care team take care of our animals
365 days a year

£25 million...

...is what we're **investing in you**



The college is part way through an ambitious £25m Estates Strategy and recently invested over £11m in phase 1, a new Technology Centre extension and refectory extension to accommodate our growth in learner numbers.



FREE gym membership for all students



...the sports titles we've won in 5 years

**Past students have
included:**

- 3 Olympic medalists
- 2 world champions
- 26 learners who
have played for
professional
sports clubs

Apprenticeships

Ready to start work? An apprenticeship could be for you. An apprenticeship is a great way to earn money whilst gaining industry experience in the workplace and studying at the same time.

Apprenticeships are ideal if you are starting out in your career, or are already employed and looking to undertake further professional development, or if you are looking for a change of career. They combine employment with workplace study, so you'll acquire new skills, knowledge and behaviours directly related to your job role, industry and career.

At Hopwood Hall College we will support you at every step of your apprenticeship, we work with a range of employers from lots of different industries. You can read more about each of our apprenticeship pathways and keep up to date with our live apprenticeship vacancies at www.hopwood.ac.uk/apprenticeships

BENEFITS OF HOPWOOD HALL APPRENTICESHIPS

- Choose from a wide range of roles within different industries
- Earn a wage whilst you learn
- Gain specialist skills through hands on experience
- Excellent career progression
- One to one learning with a work based tutor
- Receive on the job training by industry professionals
- Develop transferable skills
- Gain a qualification recognised by industry



APPRENTICESHIP PROGRAMMES

We offer a range of Apprenticeships in the following areas:

Accounting or Finance Technician

Assistant Accountant

Professional Accounting Taxation

Business Administrator

Customer Service Practitioner

Customer Service Specialist

Team Leader/Supervisor

Department/Operations Management

Hospitality Team Member

Commis Chef

Hospitality Supervisor

Production Chef

Senior Chef Production Cooking

Lead Adult Care Worker

Adult Care Worker

Leader in Adult Care

Dental Nurse

Facilities Operative

Facilities Manager (Level 4)

Facilities Management Supervisor (Level 5)

Veterinary Nurse

Metal Fabricator

Engineering Fitter

Engineering Technician

Property Maintenance

Fire Emergency Security

Carpentry and Joinery

Advanced Carpentry and Joinery

Electrician

Plumbing and Domestic Technician

Bricklayer

Plasterer

Groundworker

Gas Engineering Operative

Construction Site Supervisor

Maintenance and Operations Engineering Technician

Machining Technician

Motor Vehicle

HOW TO APPLY FOR AN APPRENTICESHIP

Step 1 - Apply

Research which type of apprenticeship is most suitable.
Apply online at www.hopwood.ac.uk to express your interest.

Step 2 - Information, Advice & Guidance

We will email you key information on what the apprenticeship entails.

Step 3 - Search

Check our live vacancies regularly and you will need to make an application for a vacancy you are interested in.

Step 4 - Interview

An employer will shortlist candidates who they would like to interview.

Step 5 - Offer

After a successful interview and the offer of an apprenticeship opportunity, you are ready to start!

Already secured an apprenticeship opportunity? Fantastic!

Please contact us on **0161 654 4373** or email us at apprenticeships@hopwood.ac.uk to get you started and we'll work closely with your employer to shape your training and development.

Useful Resources

Our advertised vacancies:

www.hopwood.ac.uk/apprenticeships/live-apprenticeship-opportunities/

Visit the government's Apprenticeship website

www.findapprenticeship.service.gov.uk

www.hopwood.ac.uk/apprenticeships



English and Maths support

Helping you to achieve the essentials you need for your future.

Employers, universities and the government require all young people to have a good command and understanding of English and Maths.

We are committed to supporting you to continually improve these skills. We have lots of additional support on offer to help you to develop your English and Maths skills during your time at Hopwood Hall College.

If you have not already achieved a minimum grade 4 in GCSE English Language and Maths you will need to continue to work towards achieving them alongside your other courses.

We offer a range of Functional Skills and GCSE qualifications in both English and Maths and will work with you to find the best route to achieving these core qualifications whilst you are with us.

Whatever your level of confidence or qualification point of entry, we will do our very best to make sure you reach your full potential in English and Maths.

BRICKWORK

Our Brickwork programmes available allow variable entry points, your starting point will depend on your prior knowledge and experience.

These courses are designed to provide you with the insight and skills that will enable you to pursue a career in this key area of construction.

Our programmes are perfect for anyone that wants to become qualified in their field and progress onto an apprenticeship while working towards becoming a fully qualified bricklayer. You will be taught in new, bespoke workshops and classrooms by industry experienced tutors. You will also undertake work experience within the industry as part of your study programme.

Course content:

- Hands-on practical skills development in Brickwork
- Knowledge of building methods and construction
- Safe working practices in construction
- Structural and decorative brickwork
- Repair and maintain masonry structures
- Complex masonry structures
- Setting out structures from drawings
- Work experience placement in industry

Apprenticeship programme available
- see page 51

Diploma in Brickwork

1 year
Level 1

Location: Middleton Campus

Entry requirements: No formal qualifications are required

FIND OUT MORE>

Diploma in Brickwork

1 year
Level 2

Location: Middleton Campus

Entry requirements: 4 GCSEs grade 3 or above to include English and Mathematics. All students are required to achieve GCSE grade 4 in Maths and English.

FIND OUT MORE>

Technical Certificate in Brickwork

1 year
Level 2

Location: Middleton Campus

Entry requirements: 4 GCSEs grade 3 or above to include English Language and Maths or a Level 1 qualification

FIND OUT MORE>



Click for a
**VIRTUAL
TOUR...**

**Your
learning
ladder**

Level 2: Brickwork,
Apprenticeship

Level 1: Brickwork

Bricklayers

National average

£29,300

£19,040 — £41,010
Low High

Employed nationally

68,287
by 2026

-1.1%

Pathways

CARPENTRY & JOINERY

These programmes are designed to provide you with the skills in carpentry and joinery required to pursue a career in this key area of construction.

They are designed to provide you with the insight and skills that will enable you to successfully pursue a career, whether you wish to progress into site carpentry or specialise in joinery.

These programmes are aimed at individuals wishing to become qualified and experts in their field in order to progress onto an apprenticeship while working towards becoming a fully qualified Carpenter or Joiner.

You will have the opportunity to work on projects within the local area and will be taught in specialised, industry standard workshops and classrooms by highly experienced and passionate tutors.

Diploma in Carpentry and Joinery

1 year
Level 1

Location: Middleton campus

Entry requirements: There are no formal entry requirements for this course.

FIND OUT MORE>

A work experience placement in industry is also an integral element of the programme, developing key employability skills and industry experience.

**Apprenticeship programme available
- see page 51**

Diploma in Carpentry and Joinery

1 year
Level 2

Location: Middleton campus

Entry requirements: 2 GCSE's grade 3 and above in English and Maths

FIND OUT MORE>

Course content:

- Hands-on practical skills development in Carpentry & Joinery
- Knowledge of building methods and construction
- Safe working practices in construction
- Basic woodworking joints
- How to maintain and use carpentry and joinery hand tools
- Using carpentry and joinery portable power tools
- Work experience placement in industry

Technical certificate in Carpentry and Joinery

1 year
Level 2

Location: Middleton campus

Entry requirements: 2 GCSE's grade 4 and above in English and Maths

FIND OUT MORE>

Click for a
**VIRTUAL
TOUR...**

Your learning ladder

Level 3: Apprenticeship or
Diploma in Carpentry &
Joinery

Level 2: Carpentry &
Joinery, Construction
Skills, Apprenticeship

Level 1: Construction Skills

Carpenters and joiners

National average

£28,440

£18,490

Low

£39,820

High

Employed nationally

238,662

by 2026

-1.1%

Pathways

ELECTRICAL INSTALLATION

Our range of Electrical Installation programmes provide an ideal route into the Electrical Installation sector whether you're aspiring to become an Electrician within the domestic or industrial sectors.

There are a number of programmes and your starting point will depend on your existing knowledge and experience. If you are looking to engage in a career in the electrical industry, these programmes will enable you to develop the necessary hands-on skills, knowledge and experience to do this.

Progression into higher level technical pathways through apprenticeships or Higher Education routes will enable you to further develop your career prospects within what is a rapidly evolving and exciting sector.

Apprenticeship programme available
- see page 51

Diploma in Electrical Installation

1 year
Level 1

Location: Middleton Campus

Entry requirements: No formal qualifications required

FIND OUT MORE>

You will gain an invaluable insight into the electrical and building services industries, which will be further underpinned by a work experience placement with an approved business, ensuring you develop employability skills essential to your career development.

The specialist workshops and training areas are all designed and equipped to industry standards and you will be supported by a team of highly experienced and passionate tutors.

Course content:

- Lighting circuits
- Rings and radials (sockets)
- Health and safety in building services
- Scientific principles

Technical Certificate in Electrical Installation

1 year
Level 2

Location: Middleton Campus

Entry requirements: 4 GCSE passes (grade 4 or above), including English, Maths and Science or a Level 1 qualification

FIND OUT MORE>

- Cooker circuits
- Shower circuits
- 18th edition consumer unit installations
- Single and three phase motors and associated starters
- Generators including micro generation theory
- Data circuit points
- SWA Sub-mains
- Containment systems; trunking, conduit and tray
- Various wiring systems and types and associated applications

T-LEVEL Building Services Engineering (Electro-technical Pathway)

2 years
Level 3

Location: Middleton Campus

Entry requirements: 4 GCSEs at grade 5 or above including Maths and English.

FIND OUT MORE>



Click for a
**VIRTUAL
TOUR...**

Your learning ladder

Level 4: HNC/HND
Electrical/Electronic Engineering

Level 3: Electrical
Installation, Apprenticeship

Level 2: Electrical
Installation, Apprenticeship

Level 1: Electrical Installation

Electricians and electrical fitters

National average

£32,760

£21,290

Low

£45,860

High

Employed nationally

223,606

by 2026

-4.0%

Pathways

PROFESSIONAL CONSTRUCTION AND THE BUILT ENVIRONMENT

Construction and the Built Environment with DEC (Design - Engineer - Construct) study programmes have been designed by industry professionals to equip you with the skills and knowledge you need to launch a successful career in either Civil Engineering, Surveying, Architecture or Project Management.

The focus on core disciplines within the Construction and the Built Environment sector will provide you with the knowledge and skills to develop and build a career within the professional construction sector.

Course Content:

- Construction Technology and Design
- Construction Science and Maths
- Sustainability
- Measurement and Surveying
- Design – Engineer – Construct

Construction and the Built Environment - First Certificate

1 year
Level 2

Location: Middleton Campus

Entry Requirements: 5 GCSEs minimum, Grade 3 Maths and English minimum

[FIND OUT MORE>](#)

T LEVEL in Design, Surveying and Planning

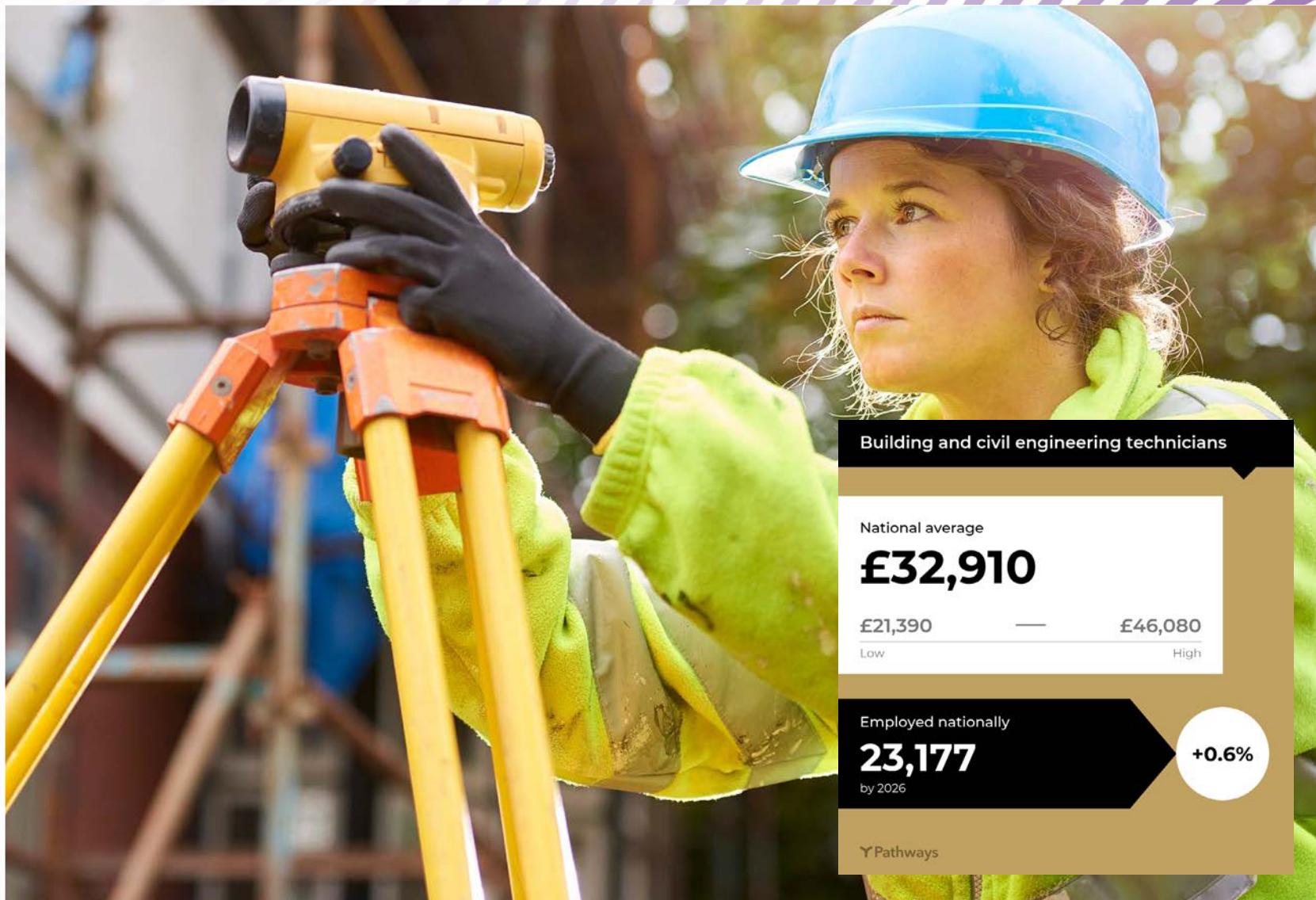
(Occupational Specialism: Surveying for Design and Construction)

2 years
Level 3

Location: Middleton Campus

Entry Requirements: 4 GCSE passes (grade 5 or above), including English and Maths

[FIND OUT MORE>](#)



Building and civil engineering technicians

National average
£32,910

£21,390 — £46,080
Low High

Employed nationally
23,177
by 2026

+0.6%

Pathways

ENGINEERING TECHNOLOGIES

The range of Engineering programmes on offer enables you to identify the pathway which is most closely aligned to your particular technical interests and career aspirations.

There are a number of vocational and technical programmes to choose from and your starting point will depend on your prior knowledge and experience.

These study programmes will enable you to develop the necessary hands-on skills, knowledge and experience in order to progress into higher level technical pathways through either an apprenticeship or Higher Education (HNC/FdEng/BSc/BEng) route, enabling you to further develop your career prospects within what is a rapidly evolving and exciting field.

Our specialist workshops, labs and facilities are all designed and equipped to industry standards and you will be supported by a team of highly experienced and passionate tutors.

Examples of pathways you will have the opportunity to study include:

Mechanical

- Manufacturing
- Fabrication and Welding
- CAD/CAM
- Systems Maintenance

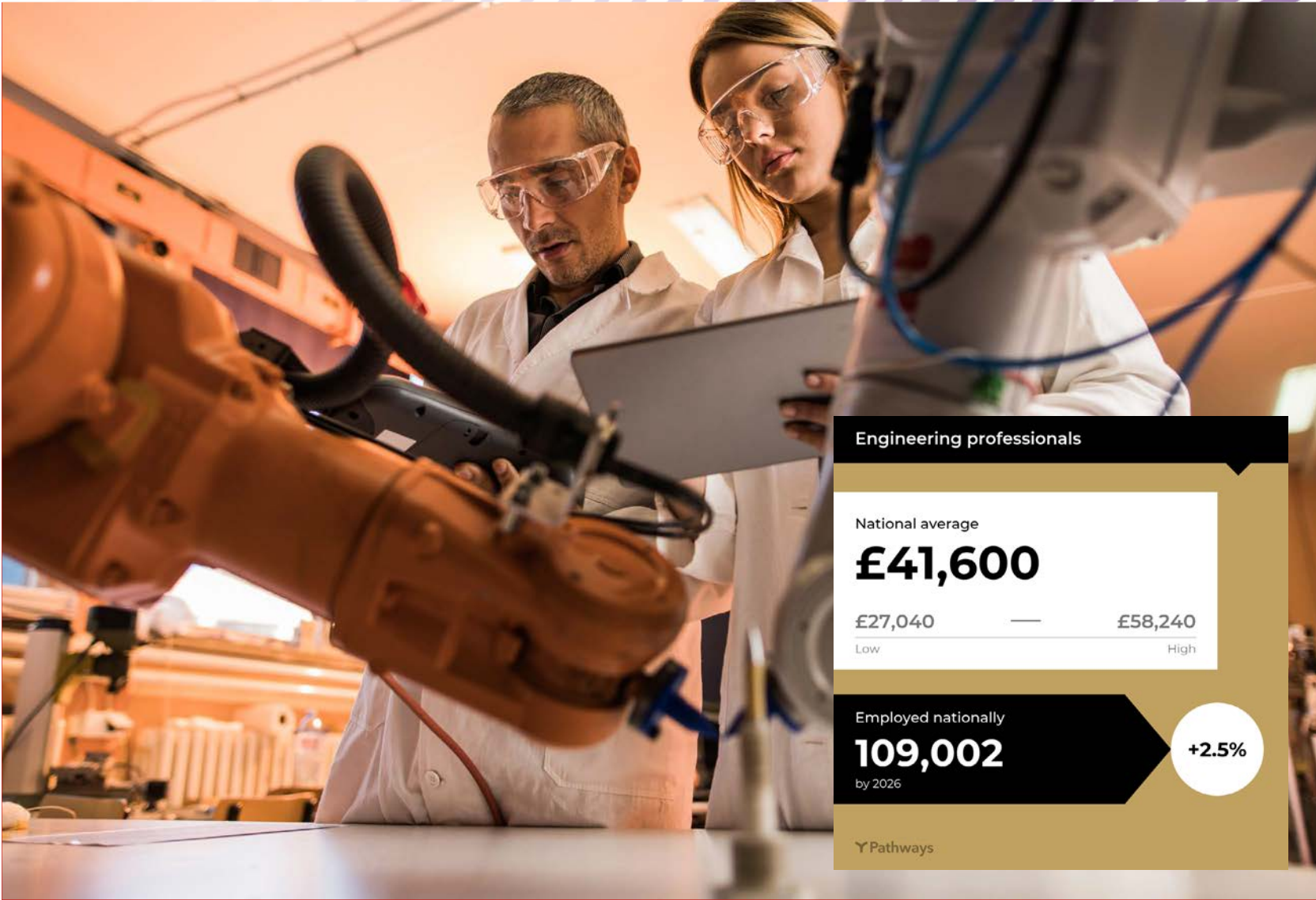
Electrical/Electronic

- HV systems and distribution
- System Design
- Digital Principles
- Electronic components

Advanced Technologies

- System Control and Automation
- Microprocessors
- Robotics
- Mechatronics
- AI





Engineering professionals

National average

£41,600

£27,040

Low

£58,240

High

Employed nationally

109,002

by 2026

+2.5%

Pathways

ELECTRICAL & ELECTRONIC ENGINEERING

The electrical/electronic study programmes are perfect if you are interested in the digital world around us which includes; automation, programming, analogue and digital communication systems, CAD/CAM and rapid prototyping.

The focus on core disciplines within engineering will provide you with the knowledge and hand-on skills needed to develop and build a successful career within the engineering sectors.

Work experience and placements within industry are integral to all study programmes and really help to develop your employability skills.

Course content:

- Electrical power and further electrical power
- Electrical and electronic principles
- Combinational and sequential logic
- Utilisation of electrical energy
- Health and safety in the workplace and engineering environment
- Communications for engineering technicians
- Maths for technicians
- Using CAD techniques in engineering
- Interpreting and using engineering information



Dulcie Turner: Studied Level 3 Electrical Engineering. Now studying Engineering at Cambridge University

"The facilities are all really good, I was really impressed"

Extended Certificate in Engineering (Electronics)

1 year
Level 2

Location: Middleton Campus

Entry requirements: 5 GCSE's minimum - Grade 3 Maths and English minimum

[FIND OUT MORE>](#)

BTEC Foundation Diploma in Electrical/Electronic Engineering

1 year
Level 3

Location: Middleton Campus

Entry requirements: GCSEs at grade 4 or above in English and Maths

BTEC Extended Diploma in Electrical/Electronic in Engineering

1/2 year
Level 3

Location: Middleton Campus

Entry requirements: Successful completion of a Foundation Diploma in Engineering and/or GCSEs at grade 4 or above in English and Maths

Click for a
**VIRTUAL
TOUR...**

Your learning ladder

Level 4: HNC
Electrical/Electronic
Engineering

Level 3: Electrical/Electronic
Engineering

Level 2: Electrical/Electronic
Engineering

Electrical engineers

National average

£50,540

£32,850

Low

£70,750

High

Employed nationally

45,677

by 2026

+2.5%

Pathways

MECHANICAL ENGINEERING

The mechanical engineering courses are ideal for anyone that is interested in the technological world around us which includes; design, manufacturing, maintenance and the engineering environment. The focus on core disciplines within engineering will provide you with the knowledge and hands-on skills needed to develop and build a successful career within the engineering sectors.

Work experience and placement within industry is integral to all study programmes and really helps to develop your employability skills.

Apprenticeship programme available - see page 51

Certificate in Engineering (2850)

1 year
Level 1

Location: Middleton Campus

Entry requirements: 4 GCSEs grade 3 and above, preferably to include English Language and Maths

[FIND OUT MORE>](#)

Course content:

- Working in engineering environments
- Principles of engineering technology
- Manual tool and equipment skills
- Manufacturing processes
- Health and safety principles within engineering disciplines
- Product fabrication
- Welding
- Technical Drawing
- CAD/CAM

Diploma in Engineering (2850)

1 year
Level 2

Location: Middleton Campus

Entry requirements: 4 GCSEs grade 4 and above, to include English Language and Maths or a Level 1 qualification

[FIND OUT MORE>](#)



Luke Humphreys: Studied Level 3 Mechanical Engineering

"You just can't go wrong with this course - I wouldn't have changed it for the world!"

T-LEVEL

- **Design and Development**
Occupational Specialism: Mechanical

2 years
Level 3

Location: Middleton Campus

Entry requirements: 4 GCSE's at Grade 6 and above including English & Maths

[FIND OUT MORE>](#)

T-LEVEL

- **Maintenance and Installation**
Occupational Specialism: Mechanical

2 years
Level 3

Location: Middleton Campus

Entry requirements: 4 GCSE's at Grade 6 and above including English & Maths

[FIND OUT MORE>](#)

BTEC Extended Diploma in Engineering

2 years
Level 3

Location: Middleton Campus

Entry requirements: 4 GCSEs grade 4 and above, including English and Maths

[FIND OUT MORE>](#)

Click for a
**VIRTUAL
TOUR...**

Your learning ladder

Level 4 : HNC in
Mechanical Engineering

Level 3: Mechanical
Engineering, Fabrication
& Welding

Level 2: Mechanical
Engineering, Fabrication
& Welding

Level 1: Engineering
Carousel (Mechanical,
Fabrication & Welding,
Electronics)

Mechanical engineers

National average

£40,600

£26,390

Low

£56,840

High

Employed nationally

93,903

by 2026

+2.5%

Pathways

MULTI-SKILLS

These diverse construction programmes enable you to try your hand at a variety of different construction and building disciplines whilst developing your practical skills and insight into the construction industry. You will study brickwork, carpentry, painting and decorating, plastering and a variety of outdoor groundwork maintenance activities.

These programmes are particularly suitable if you are looking for an introduction to the construction industry but unsure which specialist areas you wish to follow.

You will be taught in new, bespoke workshops and classrooms by industry experienced tutors. It is anticipated that you would look to specialise in a particular field on completion of your programme, which could be through a full time study or apprenticeship route.

**Apprenticeship programme available
- see page 51**

**THIS COURSE SERVES AS A BRILLIANT
INTRODUCTION TO A NUMBER OF TRADES
IN THE CONSTRUCTION INDUSTRY**

Course content:

- Bricklaying Skills
- Carpentry & Joinery skills
- Painting & Decorating skills
- Plastering skills
- Safe working practices
- Knowledge of building methods and construction
- Groundworks/paving/fencing/drainage
- Outdoor maintenance projects
- Work experience placement in industry

Diploma in Multi-skills

1 year
Level 1

Location: Middleton Campus

Entry requirements: No formal qualifications are required.

FIND OUT MORE>

Certificate in Construction Operations (Groundworks) - General Construction

1 year
Level 2

Location: Middleton Campus

Entry requirements: 4 GCSEs grade 3/D or above to include English and Maths

FIND OUT MORE>

Click for a
**VIRTUAL
TOUR...**

Your learning ladder

Level 3: Brickwork, Plastering,
Painting & Decorating,
Apprenticeship

Level 2: Brickwork, Carpentry
& Joinery, Plastering,
Painting & Decorating,
Apprenticeship

Level 1: Construction Skills,
Brickwork, Carpentry &
Joinery, Plastering, Painting
& Decorating

PAINTING & DECORATING

These courses are perfect for anyone who aims to pursue a career in painting and decorating, or aspires to working in the industry and specialising in decorative effects and spraying. You can also progress through an apprenticeship route and work towards becoming a qualified painter and decorator.

These courses will enable you to develop the skills and knowledge required for employment and/or career progression. You will have the opportunity to work with real life clients within the local area on projects.

You will be taught in new, bespoke workshops and classrooms by industry experienced tutors. You will learn the techniques of decorative effects and the application of paint by spray.

Course content:

- Hands-on practical skills development in Painting & Decorating
- Knowledge of building methods and construction
- Safe working practices in construction
- Apply foundation, plain and specialist wall coverings
- Erect and dismantle access equipment and working platforms
- Prepare common surfaces types for decoration

- Produce standard and specialist decorative effects
- Application of architectural features
- Work experience placement in industry

**Apprenticeship programme available
- see page 51**

Diploma in Painting and Decorating

1 year
Level 1

Location: Middleton Campus

Entry requirements: No formal qualifications required.

FIND OUT MORE>

Technical certificate in Painting and Decorating

1 year
Level 2

Location: Middleton Campus

Entry requirements: 4 GCSEs grade D/3 or above to include English and Maths, or the Level 1 in Painting and Decorating.

FIND OUT MORE>

Click for a
**VIRTUAL
TOUR...**

Your learning ladder

Level 3: Painting & Decorating, Apprenticeship

Level 2: Painting & Decorating, Apprenticeship

Level 1: Painting and Decorating

Painters and decorators

National average

£25,870

£16,820

Low

£36,220

High

Employed nationally

124,200

by 2026

-1.1%

Pathways

PLUMBING

The range of Plumbing courses available allow variable entry points depending on your prior knowledge and experience from level 1 through to level 3. If you are keen to embark on a career within the plumbing and heating industry, these study programmes will enable you to develop the necessary hands-on skills, knowledge and experience.

Progression into higher level technical pathways through apprenticeships or Higher Education routes will enable you to further develop your career prospects within this exciting sector.

You will gain an invaluable insight into the construction and building services industries, which will be further underpinned by a work experience placement in industry, ensuring you develop the employability skills essential to your career development.

The specialist workshops and training areas are all designed and equipped to industry standards and you will be supported by a team of highly experienced and passionate tutors.

Course content:

- Common plumbing processes
- Cold water systems
- Domestic hot water systems
- Central heating systems
- Health and safety in building services
- Scientific principles for domestic, industrial and commercial plumbing
- Sanitation and Drainage systems
- Electrical principles and processes for building services engineering
- Understand how to communicate with others within building services

Apprenticeship programme available
- see page 51



Taylor Roach: Studied
Level 3 Plumbing

“The past two years
on this course have
been the best years
of my life”

Diploma in Plumbing

1 year
Level 1

Location: Middleton

Entry requirements: GCSEs including Grade 3 English and Maths

[FIND OUT MORE>](#)

Technical Certificate in Plumbing

1 year
Level 2

Location: Middleton

Entry requirements: Successful completion of the level 1 programme or GCSEs grade 4 or above in English and Maths

[FIND OUT MORE>](#)

Click for a
**VIRTUAL
TOUR...**

Your learning ladder

Level 3: Plumbing,
Apprenticeship

Level 2: Plumbing,
Apprenticeship

Level 1: Plumbing,
Multi-skills

Plumbers & heating and ventilating installers

National average

£32,880

£21,370

Low

£46,030

High

Employed nationally

167,124

by 2026

-1.1%

Y Pathways

AUTOMOTIVE

Our range of Automotive courses allows various entry points depending on your prior knowledge and experience, from level 1 through to level 3. If you are keen to embark on a career within the Automotive industry, these programmes will enable you to develop the necessary hands-on skills, knowledge and experience.

Progression into higher level technical pathways through apprenticeships or Higher Education routes will enable you to further develop career prospects within this exciting sector.

You will gain an invaluable insight into the Automotive industries, which will be further underpinned by a work experience placement in industry, ensuring you develop employability skills essential to your career development.

The specialist workshops and training areas are all designed and equipped to industry standards and you will be supported by a team of highly experienced and passionate tutors.

Course content:

- Health and Safety
- Chassis Systems
- Engine systems
- Transmission systems
- Electrical and Electronic systems
- Inspect and service vehicle
- Diagnostic and complex diagnostic systems

Apprenticeship programme available
- see page 51

Diploma in Motor Vehicle

1 year
Level 1

Location: Middleton Campus

Entry requirements: 4 GCSEs at grade 2 or above including English and Maths.

FIND OUT MORE>

Vehicle Fitting Principles

1 year
Level 2

Location: Middleton Campus

Entry requirements: A minimum of 4 GCSEs grade 3/D or above including English Language and Mathematics. A level 1 qualification is also typically needed prior to starting this course.

FIND OUT MORE>

Diploma in Vehicle Maintenance & Repair

1 year
Level 2

Location: Middleton Campus

Entry requirements: Successful completion of the level 1 programme and achievement of Functional Skills in English and Maths at level 1 or GCSEs grade 4 or above in English and Maths.

To come straight in at level 2 then Grade 4 GCSE in English and Maths are a minimum requirement.

FIND OUT MORE>

Diploma in Vehicle Maintenance & Repair

1 year
Level 3

Location: Middleton Campus

Entry requirements: Successful completion of the level 2 programme and achievement of GCSEs grade 4 or above in English and Maths.

FIND OUT MORE>

Click for a
**VIRTUAL
TOUR...**

Your learning ladder

Level 3: Vehicle
Maintenance,
Apprenticeship

Level 2: Vehicle
Maintenance, Fast Fit

Level 1: Vehicle
Maintenance

Vehicle technicians, mechanics and electric...

National average

£29,470

£19,160

Low

£41,260

High

Employed nationally

183,036

by 2026

-4.0%

Pathways

ACCOUNTING

This course is ideal if you have strong numeracy and problem solving skills and are looking to pursue a career in accountancy or finance. You will have a unique opportunity to specialise in accountancy through AAT Level 2 and Level 3. You will also gain substantial work experience in year 1 and 2 helping you to successfully progress into employment.

In addition to your studies you will also have the opportunity to undertake work experience in an accounts environment for 1 or 2 days per week

On successful completion of this course, you will be awarded an AAT Level 3 Advanced Diploma in Accounting

Opportunities for employment may include:

- Accounts Assistant
- Bookkeeper
- Credit Controller
- Tax Assistant / Accountant

Course content:

- Preparing final accounts (sole trader/partnership)
- Cost accounting
- Preparing VAT returns
- Double entry bookkeeping
- Computerised accounts
- Spreadsheets
- Advanced book keeping
- Students will also be expected to undertake a minimum of 2 days work experience per week.

**Apprenticeship programme available
- see page 51**

Foundation Year

1 year

Location: Middleton campus

T-LEVEL

-
- **Accounting - Assistant Accountant**

2 years

Level 3

Location: Middleton Campus

Entry requirements: 5 x GCSEs at grade 4+ including English, however Maths must be at grade 5 or above.

FIND OUT MORE>

Click for a
**VIRTUAL
TOUR...**

Your learning ladder

Level 4: Diploma in
Accounting Apprenticeship

Level 3: Business Enterprise,
Accounting, Travel & Tourism

Level 2: Business Enterprise,
Travel & Tourism

Financial accounts managers

National average

£35,500

£23,080

Low

£49,700

High

Employed nationally

160,710

by 2026

+3.0%

Y Pathways

Finance officers

National average

£24,910

£16,190

Low

£34,870

High

Employed nationally

41,630

by 2026

-2.4%

Y Pathways

BUSINESS

If you have a lively and enquiring mind and a keen interest in business, including setting up your own then this study programme is perfect for you. You'll need to have a willingness to explore new ideas and an ability to communicate ideas effectively.

You learn by completing projects and assignments that are based on realistic workplace situations and activities, often with businesses in the local community.

Level 2 course content:

- Finance in business
- Customer service
- Marketing
- Introduction to retail
- Visual merchandising
- Sales and personal selling
- Recruitment and selection
- Enterprise in the business world
- Using business documents
- Promoting a brand
- Business online

Level 3 course content:

- Exploring Business
- Developing a Marketing Campaign
- Personal and Business Finance
- Managing an Event
- International Business
- Principles of Management
- Business Decision Making
- Recruitment and Selection Process
- Digital Marketing
- The English Legal System
- Branding

OUR LEARNERS HAVE ACHIEVED A 90% PASS RATE OVER THE LAST FIVE YEARS WITH OVER 90% GOING TO UNIVERSITY

**Apprenticeship programme available
- see page 51**

Introductory Certificate in Business

1 year
Level 1

Location: Middleton campus

Entry requirements: No formal requirements

[FIND OUT MORE>](#)

Business Extended Certificate

1 year
Level 2

Location: Middleton campus

Entry requirements: 4 GCSEs grade 3 or above to include English and Maths

[FIND OUT MORE>](#)

BTEC Business Extended Diploma

2 years
Level 3

Location: Middleton campus

Entry requirements: 4 GCSEs grade 4 or above to include English or Maths. BTEC Level 2 qualification, NVQ Level 2 or VRQ Level 2

[FIND OUT MORE>](#)

T-Level Business and Administration Leadership & Management

2 years
Level 3

Location: Middleton campus

Entry requirements: 4 GCSEs grade 4 or above including English & Maths. BTEC Level 2, NVQ Level 2 or VRQ Level 2 qualifications are also accepted.

[FIND OUT MORE>](#)

Click for a
**VIRTUAL
TOUR...**

Your learning ladder

Level 5: HND Business

Level 3: Business Enterprise,
Travel & Tourism, Accounting

Level 2: Business Enterprise,
Travel & Tourism

Business associate professionals

National average

£25,390

£16,510

Low

£35,550

High

Employed nationally

169,254

by 2026

+3.0%

Pathways

TRAVEL & TOURISM

If you are passionate about travel and aspire to join an exciting, challenging and vibrant industry which accounts for over 100 million jobs worldwide and 3 million in the UK then this is the perfect study programme for you.

Travel and Tourism is a multi-billion pound sector and is one of the fastest growing sectors in the world, accounting for 1 in 10 jobs in the UK, 19,000 at Manchester Airport alone.

Level 2 course content:

- Customer Service in Travel and Tourism
- The UK Travel and Tourism Industry
- Travel and Tourism Destinations
- Hospitality in Travel and Tourism
- Know about Airports and Airlines

NCFE Level 2 Extended Certificate in Travel & Tourism

1 year
Level 2

Location: Middleton campus

Entry requirements: 4 GCSEs grade 3 or above to include English and Maths

[FIND OUT MORE>](#)

Level 3 course content:

- The UK Travel and Tourism Industry
- Customer Service in Travel and Tourism
- Preparing for a Career in Travel and Tourism
- Travel and Tourism Destinations
- Hospitality in Travel and Tourism
- Marketing for Travel and Tourism
- Investigating Airline Cabin Crew
- Resort Reps
- UK and Worldwide Airports and Airlines
- Specialist Tourism
- Business Travel

NCFE Extended Diploma Travel & Tourism or NCFE Diploma Travel & Tourism (with Cabin Crew and Travel Services)

2 years
Level 3

Location: Middleton campus

Entry requirements: 4 GCSEs grade 4 or above to include English and Maths. BTEC Level 2 qualification, NVQ Level 2 or VRQ Level 2

[FIND OUT MORE>](#)

- UK, European and long-haul travel destinations
- Events in the hospitality industry
- Specialist and responsible tourism

The Level 3 course is designed as a two year study programme. Please ask for more details at your interview.

There is an option of Diploma (12 units with Level 2 Cabin Crew and Resort Reps certificates included) **or** Extended Diploma (18 units)

**OUR LEARNERS HAVE
ACHIEVED A 95% PASS RATE
OVER THE LAST FIVE YEARS**

Click for a
**VIRTUAL
TOUR...**

Your learning ladder

Level 3: Business
Enterprise Academy,
Accounting, Travel & Tourism

Level 2: Business Enterprise
Academy, Travel & Tourism

The Average Travel Manager salary
in the UK is

£41,129

Source: reed.co.uk

Air travel assistants

National average

£20,590

£15,450

Low

£26,770

High

Employed nationally

52,071

by 2026

-0.6%

Pathways

SKILLS FOR LIFE



These courses accommodate learners aged 16-24 who have challenges/barriers to entering education, employment or training. They are designed for students who want to gain some qualifications in a mixture of life, vocational, functional skills, or in a chosen vocational area.

Courses are nationally accredited and offer a variety of opportunities including enrichment, work placements, sports, trips, visits and guest speakers. Students will also gain functional skills in English, maths and ICT at an appropriate level.

Life Skills, Life Skills Plus

These courses help develop the necessary skills for independence in order to make positive decisions about your future which may or may not involve a working life. Students will also gain functional skills in English, maths and ICT at an appropriate level. Lifeskills Plus has 2 hours of supported work experience for 8 weeks, built in.

Supported Internship

This course is for young people, aged 16-25, with an Education, Health Care Plan (EHCP) and is designed to be the final step in education before employment. The work experience should be in a place of your interest and aspirations and should support ongoing progression to employment, voluntary work or apprenticeships. It includes support with English, maths and digital skills.

Think Forward

This is a study programme that offers a wide range of opportunities to participate in volunteering or work experience. It is specifically for young people who live with social anxiety that is stopping them from engaging in education. The main objective is to gain enough confidence to join a college course, gain an apprenticeship or employment.

Work Skills

The programme aims to provide a broad learning experience with the development of the personal and social skills you need to access employment. Students will also gain

functional skills in English and maths at an appropriate level. This course has a 2 day a week independent work placement built in for 15 weeks.

Pathways to Adulthood

This is a study programme that offers a wide range of relevant and practical activities as well as support for young adults with a diverse range of needs move towards preparing for adulthood.

It has been designed specifically for young people who have learning difficulties or disabilities.



Pathways to Adulthood

1 year
Entry Level

Location: Middleton campus

Entry requirements: No formal qualifications. Learners must have EHCP

Age

16-25

Five aspects

- Employability
- Good Health
- Independent Living
- Community Inclusion
- Maths & English

FIND OUT MORE>

Certificate in Independent Living

1 year
Entry Level 2

Location: Middleton campus

Entry requirements: No formal qualifications

Units include

- Using public transport
- Making choices
- Maths & English
- Looking after yourself at home
- Personal health & care
- Making a simple meal
- Household shopping

FIND OUT MORE>

Life Skills Plus

1 year
Entry Level 2

Location: Middleton campus

Entry requirements: No formal entry requirements to begin this course however, it is beneficial to have completed Entry Level 1 or Life Skills.

Units include

- Action Planning to Improve Performance
- Looking and Acting the Part in the Work Place
- Induction to Work
- Undertaking an Enterprise Project
- Travelling to and from work
- Health and Safety Procedures in the Work Place
- Building Confidence and Self Esteem
- Working with others
- Domestic Appliances
- Team activities

FIND OUT MORE>

Think Forward

1 or 2 years
Entry Level 3

Location: Middleton campus

Entry requirements: No formal qualifications. Entry Level 2 or ability to carry out a work placement.

Units include

- Alcohol and drug misuse awareness
- Kitchen health & safety/ using kitchen equipment
- Work experience
- Emotional intelligence
- Teamwork
- Using a telephone and photocopier
- Undertaking an enterprise activity

FIND OUT MORE>

Supported Internship

1 year

Location: Middleton campus

Entry requirements:

Learners need to demonstrate their willingness to achieve sustainable employment and should be able to complete a placement supported by a job coach.

Units include

- Employability skills
- Customer service
- Communication
- Work experience
- Maths & English

FIND OUT MORE>



Tomas started with us and completed a 2-year programme of WorkSkills. He went to Business, completed the supported Internship and has now secured voluntary work at Oldham Hospital.

Tomas epitomizes everything the Skills for Life department is about - supporting young people to gain confidence and progress on to a course of their choice. Well done Tomas, we wish you all the best for the future.

Your learning ladder

Level 2: GCSE English, GCSE Maths

Level 1: English, Maths, Skills for Life, Employability Skills

Entry Level: Functional English, Functional Maths
Life Skills Plus, Life Skills, Supported, Internship, Work Skills

DIGITAL, IT AND COMPUTING

Do you enjoy creating computer programs, websites and games? Do you like the challenge of solving computer problems and want to work on live computer networks? If so, then this is the course for you.

We'll enable you to combine your creative ideas with the latest PC technology and generate multimedia applications for use in the real world.

The focus of this course is to give you the skills and knowledge on a variety of programming languages enabling you to kick start a great career in Software Development or IT Networking.

You will gain experience undertaking real live projects using current industry standard programming software. You will also gain insight into PC and server technology.

These courses will also give you hands-on experience in our own IT Repair Shop and, if you are studying one of our T-Level Digital routes you will take part in an extended industry placement of 45 days.

Course content:

- Computer Programming
- Website Development
- Cyber Security
- Games Design and Development
- Using Social Media in Business
- Software installation and Configuration
- Big Data and Analytics
- The Internet of Things

OUR LEARNERS HAVE ACHIEVED A 95% PASS RATE OVER THE LAST FIVE YEARS WITH OVER 90% GOING TO UNIVERSITY

**Apprenticeship programme available
- see page 51**

Certificate for IT Users

1 year
Level 1

Location: Middleton campus

Entry requirements: No formal requirements

FIND OUT MORE>

Technical Diploma in Digital Technology

1 year
Level 2

Location: Middleton campus

Entry requirements: 4 GCSEs grade 3 or above to include English and Maths

FIND OUT MORE>

National Extended Diploma in Information Technology

2 years
Level 3

Location: Middleton campus

Entry requirements: 4 GCSEs grade 4 or above to include English and Maths

FIND OUT MORE>

T-Level Digital Support Services

2 years
Level 3

Location: Middleton campus

Entry requirements
5 GCSEs grade 4 or above to include English and Maths. Maths must be grade 5+.

T-Level Digital Production, Design & Development

2 years
Level 3

Location: Middleton campus

Entry requirements: 5 GCSEs grade 4 or above to include English and Maths. Maths must be grade 5+.

FIND OUT MORE>



Click for a
VIRTUAL
TOUR...

Your learning ladder

- Level 5:** HTQ/HND Computing
- Level 3:** Digital Technology/
Digital Support Services
- Level 2:** Digital Technology
- Level 1/2:** Digital Technology
and Computing

SCIENCE

In Applied Science we offer a suite of courses that provide an educational foundation that's perfect for anyone wishing to pursue a career in science. They cover a wide range of topics and require a high level of practical laboratory skills.

Successful students will achieve a recognised qualification to enable them to move into employment or apply to study at degree or Higher National Diploma/Certificate level.

Course content:

Year 1

- Principles and applications of science I
- Practical scientific procedures and techniques
- Science investigation skills
- Laboratory techniques and their application
- Genetics and genetic engineering
- Application of organic chemistry
- Human regulation and reproduction

Year 2

- Principles and applications of science II
- Investigative project
- Contemporary issues in science
- Physiology of human body systems
- Biological molecules and metabolic pathways
- Practical chemical analysis
- Medical Physics Applications

THE LEVEL 3 COURSE IS EQUIVALENT TO THREE FULL A-LEVELS AND CONTAINS A LARGE AMOUNT OF PRACTICAL WORK

Diploma in Applied Science

1 year
Level 2

Location: Middleton campus

Entry requirements:
4 GCSE's grade 2 or above to include English and maths

[FIND OUT MORE>](#)

BTEC National Foundation Diploma in Applied Science

1 year
Level 3

Location: Middleton campus

Entry requirements:
4 GCSEs grade 4 or above to include English Language, Maths and Science

[FIND OUT MORE>](#)

BTEC National Extended Diploma in Applied Science

2 years
Level 3

Location: Middleton campus

Entry requirements:
4 GCSEs grade 4 or above to include English Language, Maths and Science

[FIND OUT MORE>](#)

Extended Diploma in Biomedical Science

2 years
Level 3

Location: Middleton campus

Entry requirements:
4 GCSEs grade C/4 or above to include English, Mathematics and Science. BTEC Level 2 qualifications, NVQ Level 2 or VRQ Level 2 qualifications are also accepted.

[FIND OUT MORE>](#)

Extended Diploma in Forensic Science

2 years
Level 3

Location: Middleton campus

Entry requirements:
4 GCSEs grade C/4 or above to include English, Mathematics and Science. BTEC Level 2 qualifications, NVQ Level 2 or VRQ Level 2 qualifications are also accepted.

[FIND OUT MORE>](#)

T-Level Laboratory Science

2 years
Level 3

Location: Middleton campus

Entry requirements:
5 x GCSEs at grade 4+ including Maths, English and Science which must be at grade 5 or above

[FIND OUT MORE>](#)

Click for a
**VIRTUAL
TOUR...**



Dionne Whalley: The practical experiments and professional environment I experienced on my course gave me more satisfaction than learning at school and the support given by my lecturers helped widen my knowledge of careers in medicine.

Whilst studying at Hopwood Hall College, I learned a great deal about diseases, the effect of chemicals on the human body, medical anatomy and other subjects needed to become a research expert.

Studying Medicine at University of Chester

Your learning ladder

Level 3: T Level Laboratory Science
BTEC Applied Science Extended
Diploma, BTEC Applied Science
Foundation Diploma

Level 2: Diploma in Applied Science

Pharmacists

National average

£38,560

£25,060

Low

£53,980

High

Employed nationally

71,142

by 2026

+4.1%

Y Pathways

Pharmaceutical technicians

National average

£23,370

£15,190

Low

£32,710

High

Employed nationally

38,222

by 2026

+4.2%

Y Pathways

ANIMAL MANAGEMENT

If you have a keen interest in learning about animals and want to develop new skills, we offer a wide range of courses in our incredible woodland setting which will help you achieve your career goals. Our courses cover all aspects of animal management to fully prepare you for employment in a variety of animal industries, as well as for progression onto higher education.

Our purpose built indoor and outdoor teaching centres provide students with some of the **very best facilities in Greater Manchester**. Our unique woodland setting in around 70 acres means that we have plenty of space to include: wildlife enclosures, specialised teaching zones for each group of animals, veterinary nursing teaching facilities and dedicated treatment room, dog grooming salon, dog boarding kennels, Blue Cross rehoming centre and zoo animal zone.

We have over 500 animals which include small mammals, birds, reptiles, amphibians, alpacas, wallabies, flamingoes, meerkats, ponies, bats, rare breed farm animals, cats, dogs and aquatics as well as endangered species from as far afield as Madagascar.

Course content across all levels includes:

- Maintain animal health and welfare
- Animal feeding and accommodation
- Animal handling
- Working in the animal care industry
- Health and safety for land-based industries
- Animal nursing
- Animal breeds and grooming
- The principles of animal biology
- Animal anatomy and physiology
- Genetics and inheritance
- British wildlife species, habitats and rehabilitation

- Care of exotic animals, zoo animals, ornamental aquatics, horses, livestock
- Kennels and catteries

OUR LEARNERS AND STAFF RUN THE GREATER MANCHESTER REHOMING SERVICE FOR THE BLUE CROSS



Diploma in Work Based Animal Care

1 year
Level 1

Location: Middleton campus

Entry requirements: Some GCSEs grade 1-3 to include English Language and Maths at minimum Grade 1.

[FIND OUT MORE>](#)

Technical Certificate in Animal Care

1 year
Level 2

Location: Middleton campus

Entry requirements: 4 GCSEs grade 3 or above to include English Language, Maths and science or a Level 1 qualification

[FIND OUT MORE>](#)

Certificate in Work-Based Animal Care

1 year
Level 2

Location: Middleton campus

Entry requirements: 4 GCSEs grade 3 or above with English Language and Maths at Grade 2 or above

[FIND OUT MORE>](#)

City & Guilds Advanced Technical Extended Diploma in Animal Management

2 years
Level 3

Location: Middleton campus

Entry requirements: 5 GCSEs grade 5 or above to include English Language, Maths and science. Level 2 City and Guilds Technical Certificate in Animal Care grade Merit

[FIND OUT MORE>](#)

Technical Extended Diploma Animal Care and Management

2 years
Level 3

Location: Middleton campus

Entry requirements: 5 GCSEs grade 5 or above to include English, Maths and Science.

[FIND OUT MORE>](#)

Click for a
**VIRTUAL
TOUR...**

Your learning ladder

Level 4: HND Animal
Management

Level 3: Animal Management

Level 2: Technical
Animal Care, Work-Based Animal
Care, Animal Nursing

Level 1: Work Based
Animal Care



Animal care services occupations

National average

£18,680

£14,010

Low

£24,290

High

Employed nationally

82,641

by 2026

+5.8%

Pathways





Employers we work with on a regular basis:

- Animal Care Software
- Berkshire Pig Breed Society
- Blue Cross
- Canine Country Club
- Cats Protection
- Heaton Park
- International Zoo Vet Group
- Manchester Metropolitan University
- Manchester Zoo
- Mellings Vets
- Mercer Falconry
- Nottingham Trent University
- PDSA
- Rare Breed Survival Trust Pig Club
- RSPCA Manchester Animal Hospital
- Rochdale Council Neighbourhoods
- Wendy Lane Vets
- Valentines' Vets
- Vets for Pets

ANIMAL NURSING

Veterinary Nursing is a popular career choice for people of all ages and there is no age limit as to when you can become a veterinary nurse.

The Level 2 Certificate for Animal Nursing Assistants is held in high regard in veterinary practices, providing an alternative route to GCSEs and enhanced opportunities to progress to the Royal College of Veterinary Surgeons Level 3 Diploma in Veterinary Nursing.

The Level 2 Certificate covers a range of units and provides learners with the information and skills required to play a valuable supporting role to qualified veterinary staff, and to assist owners in the correct management of their companion animals.

Key to successfully completing the course is securing a position in a Training Practice (TP).

There is fierce competition within the industry and you may have to accept a ward assistant or receptionist role to enable you to get a little experience before you are successful in finding a student position.

We also encourage students to look for volunteering and work experience opportunities as this will allow you to demonstrate your commitment to a prospective employer and enhance your CV.

STUDENTS ARE TAUGHT BY REGISTERED VETERINARY NURSES WHO STILL WORK IN PRACTICE IN ADDITION TO THEIR TEACHING ROLE

Course content:

- Deliver basic treatments to animals
- Companion animal anatomy and physiology
- Exotic animal and physiology
- Infection control
- Companion animal parasitology and zoonosis
- Feed, water and accommodation of animals
- Control and restrain animals
- Fluid therapy and anaesthesia
- Principles of basic nursing

Certificate for Animal Nursing Assistants

1 year

Level 2

Location: Middleton campus

Entry requirements: 4 GCSEs grade 3 or above to include English Language, Maths and science or a Level 1 qualification

FIND OUT MORE>



My advice would be to make sure you always get involved in practicals as you may never get to do it again outside of college.

"Always put 100% effort in to get the grades and then you can really reap the benefits of what the course has to offer!"

Mia McDougall
Animal Care Assistant, Vets Now

Click for a
**VIRTUAL
TOUR...**

Your learning ladder

Level 2: Work-based Animal
Care, Animal
Nursing

Level 1: Work Based
Animal Care

Veterinary nurses

National average

£20,500

£15,380

Low

£26,650

High

Employed nationally

17,722

by 2026

+5.8%

Y Pathways

EQUINE CARE AND EQUINE MANAGEMENT

Do you aspire to work with horses? Come and study in our incredible 70 acre woodland setting to prepare you for the many diverse employment opportunities within this sector, including at riding schools, equestrian centres, livery yards, competition yards, trekking centres, and working with breeders, trainers, welfare charities and freelance services.

You may choose a job where riding is involved, or you may choose a non-riding role, for example in retail, manufacturing or event management. There are also opportunities with allied businesses such as membership bodies, professional associations or those involved with education and training.

Working with horses is extremely rewarding, but it can require hard work, with long hours. Dedication and enthusiasm to the role are key to success.

NB. To be offered a place on the course, you must have spent some time working in an equine environment and have some riding experience. You should be in good general health, be prepared for hard, physical work and have a clear career goal to enter the equine industries.

You will gain an understanding of the skills and knowledge that are important when you are working with horses, or progressing to further learning and training in this area.

What does this qualification cover?

This qualification covers the skills you will need to progress to further learning and training, or to enter the world of work in the equine industry.

Expect to study the following content:

- Health and safety for the land-based industries
- Working in the equine industry
- Equine health and welfare
- Horse tack and equipment
- Undertake routine stable duties
- The principles of feeding and watering horses
- Horse handling and grooming
- Introduction to lunging horses

Level 3 Course content:

- Health and Safety
- Work Experience
- Undertake Stable Yard Operations
- Equine Health
- Horse Tack and Equipment
- Biological Systems of Horses
- Prepare Horses for Presentation
- Equine Feeding and Nutrition
- Horse Behaviour and Welfare
- Principles of Equitation

- Contribute to Managing an Equine Event
- Principles of Horse Fitness
- Business Management in the Land Based Sector

You will then have the choice of studying some of the following options:

- Equine anatomy and physiology
- Horse behaviour
- Riding horses on the flat
- Riding horses for exercise
- Keeping horses at grass
- Assisting with the transportation of horses
- Assisting with the care of competition horses

The optional units may help with your progression onto the Level 3 Technical qualifications where there may be further specialist options for you to choose from. You'll get lots of practice and support to enable you to develop the required skills and knowledge to prepare you for the learning and end assessment.

There is also a requirement to complete 150 hours of work experience. This will form part of your timetabled sessions and you will be working 1 day a week all year. This will be at a local riding centre.

Will the qualification lead to employment, and if so, in which job role and at what level?

Achievement of this qualification demonstrates to an employer that you have the necessary technical skills and knowledge they are looking for when recruiting for a:

- junior groom
- junior equine retail assistant

Will the qualification lead to further learning?

Yes. Once you have successfully completed this qualification, you could go on to study a Level 3 College-based qualification.

Technical Certificate in Equine Care

1 year
Level 2

Location

Middleton Campus

Entry requirements:

4 GCSEs at Grade 3 or above to include English Language, Maths and Science. Some riding experience is essential.

FIND OUT MORE>



Over one year:

- Level 3 Advanced Technical Certificate in Equine Management

Over two years:

- Level 3 Advanced Technical Extended Diploma in Equine Management (1080)

NB. Some riding experience is essential. You must have your own riding hat and boots for the start of the course.

Advanced Technical Extended Diploma in Equine Management

2 years
Level 3

Location

Middleton Campus

Entry Requirements: 5 GCSEs Grade 5 or above to include English Language, Maths and Science at Grade 5

Learners will undertake a riding assessment to determine riding ability.

FIND OUT MORE>



Thanks to its state-of-the-art, motion control technology our eventing simulator can replicate jumps of up to 1.20m high, and moves in a way no other simulator can.



Animal care services occupations

National average

£18,680

£14,010

Low

£24,290

High

Employed nationally

82,641

by 2026

+5.8%

Y Pathways

The average Equine Manager salary in the UK is

£47,261

Source: Glassdoor 2023

BTEC INTRODUCTORY CERTIFICATE IN SPORT

If you are passionate about Sport and want to pursue a career in the sports industry then these are the courses for you. The majority of our students progress onto university and obtain a degree in a wide variety of sports related disciplines including Sports Psychology.

Our courses have been developed to meet the expanding employment opportunities within the industry including: health and fitness, coaching and teaching, professional sport and performance analysis and we have excellent links with Your Trust, Rochdale Hornets RLFC and Barrow AFC.

In addition Rochdale Hornets use our outstanding facilities as their training base which shows that you can expect to learn in professional sports performance environments.

Course content:

- Anatomy and physiology in sport
- Sports coaching and leadership
- Sports nutrition
- Sports psychology
- Sponsorship and sport as a business
- Fitness training
- Organising sports events
- Healthy lifestyles
- Fitness testing
- Sports Development
- Externally assessed exams (Level 2 and Level 3 only)
- Anatomy
- Physiology



During his studies, Tony was part of the team that won the College's first European trophy - The Eindhoven Cup. Since leaving Hopwood Hall College, Tony studied an ASC in Physiotherapy and is now a chartered Physiotherapist.

In his career to date, Tony has worked at clubs including Accrington Stanley, Notts County and Wigan Athletic.

Tony Tompos, Academy Physiotherapist at Scottish Rugby Union

BTEC Introductory Certificate in Sport

1 year
Level 1

Location: Middleton

Entry requirements: No formal qualifications

FIND OUT MORE>

BTEC First Certificate in Sport

1 year
Level 2

Location: Middleton

Entry requirements: 4 GCSEs grade 3 or above to include English and Maths

FIND OUT MORE>

BTEC National Diploma in Sport

2 year
Level 3

Location: Middleton

Entry requirements: 4 GCSEs grade 4 in English or Maths. BTEC Level 2 Qualification, NVQ Level 2 or VRQ Level 2

FIND OUT MORE>

BTEC National Extended Diploma in Sport

2 years
Level 3

Location: Middleton

Entry requirements: 5 GCSEs grade 4 or above to include English and Maths and Science/PE. BTEC Level 3 90 credit Introductory Qualification, NVQ Level 2 or VRQ Level 2

FIND OUT MORE>

Click for a
**VIRTUAL
TOUR...**

Your learning ladder

Level 4: Foundation Degree
Sports Coaching &
Development

Level 3: Diploma in Sport,
Football Academy, Rugby
Academy, Sports Science,
Sports Therapy, Advanced
Fitness Academy

Level 2: Certificate in Sport,
Football Academy, Rugby
Academy, Fitness Academy

Level 1: Introductory
Certificate in Sport, Football
Academy, Rugby Academy

Past students successes include:

- 3 Olympic medalists
- 2 world champions
- 26 learners who have played for professional sports clubs

The average Football
Coach salary
in the UK is

£29,694

Source: talent.com

SPORT AND EXERCISE SCIENCE

Career opportunities for sport scientists have grown significantly in recent years and that growth looks set to continue as professional sports teams continue to strive for sporting excellence.

Spectators of international and professional sporting events will have seen the role of sport and exercise science in the development and success of the athletes. Experts in Psychology, Physiology and Biomechanics have helped sports professionals improve their ability to compete at the highest level. When things go wrong and an athlete is injured, the sport and exercise science professional can help.

With marginal differences determining winning and losing, the sport and exercise professional is now a key figure in elite sporting environments.

Our outstanding Sports Science labs ensure that you will learn using the latest equipment, with many of our graduates going on to careers into Sports Science and the world of sports therapy and rehabilitation.

Course content:

- Sport and exercise physiology
- Anatomy
- Applied sport and exercise psychology
- Nutrition for sport and exercise performance
- Field and laboratory based fitness testing
- Applied research methods in sport and exercise science
- Sports injury and massage
- Functional anatomy
- Sport and exercise physiology

- Nutrition for sport and exercise performance
- Physical activity for individual and group based exercise
- Coaching for performance
- Sports Massage
- Applied research methods in sport and exercise science
- Research project in sport and exercise science
- Technology in sport and exercise science
- 4 externally assessed exam and multiple coursework-based units

In addition, you will have an opportunity to complete:

- A First Aid in Sport Award
- Level 1 in Strength and Conditioning

The Level 3 course is designed as a two year study programme but there is an option to undertake a Subsidiary Diploma in one year instead. [Please ask for more details at your interview.](#)

The Level 3 Extended Diploma combines units across a variety of sport science disciplines. It is imperative that you have achieved both English and Maths GCSE at 4 or above at the point of entry.

Additionally, a Science GCSE at 4 or above is also desirable given the demands of the course. It is important to note that students will undertake externally assessed exams on completion of the course.

BTEC Extended Diploma in Sport Science

2 years
Level 3

Location: Middleton

Entry requirements: GCSEs grade C/4 or above to include English and Mathematics. Alternatively, the BTEC Level 3 90 credit Introductory Qualification, NVQ Level 2, or VRQ Level 2.

[FIND OUT MORE>](#)

STUDENTS HAVE ACCESS TO A DEDICATED SPORTS SCIENCE LAB AND TWO SPECIFIC SPORTS MASSAGE SUITES

Past students successes include:

- 3 Olympic medalists
- 2 world champions
- 26 learners who have played for professional sports clubs

Your learning ladder

Level 4: Foundation Degree Sports Development

Level 3: Diploma in Sport, Football Academy, Rugby Academy, Sports Science, Sports Therapy, Advanced Fitness Academy

Level 2: Certificate in Sport, Football Academy, Rugby Academy, Fitness Academy

Level 1: Award in Sport, Football Academy, Rugby Academy

Click for a
**VIRTUAL
TOUR...**

Physiotherapists

National average

£35,010

£22,760

Low

£49,020

High

Employed nationally

72,397

by 2026

+4.1%

Pathways

THE PERSONAL TRAINING ACADEMY

Fitness and health is a multi-million pound industry and growing.

The Personal Training Academy offers a unique opportunity for enthusiastic, young people who are interested in becoming Fitness Instructors and Personal Trainers. The course is aimed at people who already attend gyms and aspire to work in gym environments or may have gym instructor qualifications that they wish to add to.

Once you have completed Year 1 and Year 2 of the Personal Training Academy you will be equipped with a portfolio of qualifications which meet the needs of both local and national employers.

Past students successes include:

- 3 Olympic medalists
- 2 world champions
- 26 learners who have played for professional sports clubs



Stuart Bithell

2021 Olympic Gold Medal Winner & 2012 Olympic Silver Medal Winner studied BTEC National Diploma in Sport at Hopwood Hall College

Course content:

- Gym instructor
- Personal trainer
- Circuit instructor
- Outdoor fitness
- Nutrition
- Exercise and fitness knowledge
- Business and marketing
- Indoor cycling
- Studio resistance
- Exercise for healthy children

Please note - This is an industry ready qualification and now carries UCAS points at Level 3.



Fitness Academy - Gym Instructor

1 year
Level 2

Location: Middleton

Entry requirements: 4 GCSE'S to include both English and Maths Grade 4.

FIND OUT MORE>

Advanced Fitness Academy - PT

1 year
Level 3

Location: Middleton

Entry requirements: 4 GCSEs grade 4 or above to include English or maths. Level 2 gym qualification, NVQ Level 2 or VRQ Level 2.

FIND OUT MORE>



Click for a
**VIRTUAL
TOUR...**

Your learning ladder

Level 4: Foundation Degree Sports Development

Level 3: Diploma in Sport, Football Academy, Rugby Academy, Sports Science, Sports Therapy, Advanced Fitness Academy

Level 2: Certificate in Sport, Football Academy, Rugby Academy, Fitness Academy

Level 1: Award in Sport, Football Academy, Rugby Academy

The average Personal Trainer salary in the UK is

£29,049

Source: indeed.com

RUGBY ACADEMY

This sports performance academy is perfect if you have a talent for rugby league. The academy is delivered alongside one of the educational qualifications below and places are subject to maintaining the required academic standard and attendance.

A 'work hard play hard' ethos is expected of all students and a balanced approach to the sporting/academic demands of the programme is essential.

The sports performance rugby academy is run by qualified, highly respected and well-known professional coaches who have developed a unique training programme which includes specialist advice on nutrition, sports therapy, sports psychology and skills development.

Throughout all of the Level 2 and Level 3 courses, students will undertake externally assessed exams.



AS OUR FACILITIES ARE OF SUCH A HIGH STANDARD, OUR RUGBY ACADEMY HAS ALSO BECOME A DEN FOR THE ROCHDALE HORNETS, A PARTNER OF THE COLLEGE WHO USE OUR EXCEPTIONAL TRAINING FACILITIES.

THEY HAVE ALSO PROVIDED OPPORTUNITIES FOR OUR PLAYERS TO TRAIN WITH THEM AND SOME HAVE EVEN BEEN SIGNED BY THEM, MAKING OUR RUGBY ACADEMY THE PERFECT PATHWAY INTO LEAGUE !!

Diploma in Sport with Rugby

1 year
Level 1

Location: Middleton

Entry requirements: No formal qualifications

FIND OUT MORE>

Extended Certificate Sport with Rugby

1 year
Level 2

Location: Middleton

Entry requirements: 4 GCSEs grade 3 or above to include English and Maths

FIND OUT MORE>

Diploma in Sport with Rugby

2 years
Level 3

Location: Middleton

Entry requirements: 4 GCSEs grade 4 or above to include English and Maths. NVQ Level 2 or VRQ Level 2

FIND OUT MORE>

Past students successes include:

- 3 Olympic medalists
- 2 world champions
- 26 learners who have played for professional sports clubs

Click for a
**VIRTUAL
TOUR...**

Your learning ladder

Level 4: Foundation Degree
(FdSc) Sports Coaching

Level 3: Diploma in Sport,
Football Academy, Rugby
Academy, Sports Science,
Sports Therapy, Advanced
Fitness Academy

Level 2: Certificate in Sport,
Football Academy, Rugby
Academy, Fitness Academy

Level 1: Award in Sport,
Football Academy, Rugby
Academy



Rugby Academy graduate Matty Ashton now plays for Warrington Wolves in the Super League

FOOTBALL ACADEMY

If you have a passion and talent for football then this is the place for you. Established in 2000, Hopwood Hall Football Academy has produced huge numbers of successful alumni. Over the years we have won over 40 trophies both locally and internationally. The academy has outstanding on site facilities and we run annual overseas residenceals.

We are delighted to work in partnership with Paris Saint-Germain Academy England.

Paris Saint-Germain Academy England is dedicated to developing players of all abilities. Fitness, health, wellbeing and nutrition are fundamental parts within the Academy.

As a student at Hopwood Hall College you become part of the Paris Saint-Germain family. The goal of the partnership is to not only develop the football players but also ensure that each individual's educational targets are achieved.

The Football Academy is run by qualified, highly respected and well-known professional coaches who know how to bring out the best in you.

Please note that competitive fixtures mean that students must be under 19 at the start of the course.

Course content:

- Principles of anatomy and physiology in sport
- Sports coaching
- Practical team sports
- Sports nutrition
- Psychology for sports performance
- Fitness training and programming
- Sports leadership
- Organising sports events
- Injury in sport



**HOPWOOD HALL
COLLEGE**



Diploma in Sport with Football

1 year
Level 1

Location: Middleton

Entry requirements: No formal qualifications

FIND OUT MORE>

Extended Certificate in Sport with Football

1 year
Level 2

Location: Middleton

Entry requirements: 4 GCSEs grade 3 or above to include English and Maths

FIND OUT MORE>

Football BTEC Diploma in Sport

2 years
Level 3

Location: Middleton

Entry requirements: 4 GCSEs grade 4 or above to include English and Maths, NVQ Level 2 or VRQ Level 2

FIND OUT MORE>



**THE FOOTBALL ACADEMY
IS CURRENTLY THE ECFA
NORTH WEST LEAGUE
CAT 2A LEAGUE
CHAMPIONS**



Past students successes include:

- 3 Olympic medalists
- 2 world champions
- 26 learners who have played for professional sports clubs

**Click for a
VIRTUAL
TOUR...**

Your learning ladder

Level 4: Foundation Degree (FdSc)
Sports Coaching & Development

Level 3: Diploma in Sport, Football
Academy, Rugby Academy, Sports
Science, Sports Therapy, Advanced
Fitness Academy

Level 2: Certificate in Sport, Football
Academy, Rugby Academy, Fitness
Academy

Level 1: Award in Sport, Football Academy,
Rugby Academy



"The football Academy course really set me up for my journey in life and gave me the foothold into the career I wanted to pick, not just the course, but the people who were here too".

**PETE WILD (CENTRE)
BARROW FC MANAGER**

WOMEN'S FOOTBALL ACADEMY

If you have a passion and talent for football then this is the place for you. The Women's Football Academy at Hopwood Hall has outstanding on site facilities and we work in partnership with Paris Saint-Germain Academy England.

Paris Saint-Germain Academy England is dedicated to developing players of all abilities. Fitness, health, wellbeing and nutrition are fundamental parts within the Academy.

The sessions are devised by the club's technical staff and follow the Paris Saint-Germain playing philosophy, while adapting the position and level of each player. As a student at Hopwood Hall College you become part of the Paris Saint-Germain family.

The goal of the partnership is to not only develop the football players but also ensure that each individual's educational targets are achieved.

At the Paris Saint-Germain Academy at Hopwood Hall you can expect to be taught by qualified, highly respected, professional coaches who know how to bring out the best in you and who aim to increase the numbers of women playing football professionally.

Course content:

- Principles of anatomy and physiology in sport
- Sports coaching
- Practical team sports
- Sports nutrition
- Psychology for sports performance
- Fitness training and programming
- Sports leadership
- Organising sports events
- Injury in sport

Throughout all of the Level 2 and Level 3 courses, students will undertake externally assessed exams.



**HOPWOOD HALL
COLLEGE**



Women's Sport with Football

1 year
Level 1

Location: Middleton

Entry requirements: No formal qualifications

FIND OUT MORE>

Women's Sport with Football

1 year
Level 2

Location: Middleton

Entry requirements: 4 GCSEs grade 3 or above to include English and Maths

FIND OUT MORE>

Women's Sport with Football

1 year
Level 3

Location: Middleton

Entry requirements: 4 GCSEs grade 4 or above to include English and Maths. NVQ Level 2 or VRQ Level 2

FIND OUT MORE>

Past students successes include:

- 3 Olympic medalists
- 2 world champions
- 26 learners who have played for professional sports clubs

Click for a
**VIRTUAL
TOUR...**

Your learning ladder

Level 4: Foundation Degree (FdSc) Sports Coaching

Level 3: Diploma in Sport, Football Academy, Sports Science, Sports Therapy, Advanced Fitness Academy

Level 2: Certificate in Sport, Football Academy, Fitness Academy

Level 1: Award in Sport, Football Academy

The average Womens Footballer salary in the UK is

£47,000

Source: bbc.com (analysis)

BASKETBALL ACADEMY

Are you passionate about basketball and looking to develop your skills? With fantastic on site facilities, our Basketball Academy is the perfect place for you. We work with Manchester Magic to deliver a Basketball Education programme here at the College.

Manchester Magic, founded in 1997, are based at the Manchester Basketball Centre. It was originally named Amaechi Basketball Centre after British NBA star John Amaechi, who grew up in Stockport and learnt his basketball under Joe Forber, the club's co-founder. Amaechi, who played for the Cleveland Cavaliers, Orlando Magic and Utah Jazz, eventually played competitively for the Magic once his NBA career had come to an end.

The main emphasis of the programme is to develop the sport of basketball in the borough of Rochdale and beyond, making use of our outstanding Sports Arena facilities. The opportunities for our basketball players are endless and with the growth of the partnership, these opportunities will be present both inside and outside of the classroom.

You can study this programme on a variety of courses ranging from Level 1 in Sport to Level 3 Extended Diploma in Sport, with training and matches running alongside the delivery of education provision.

Course content:

- Anatomy and Physiology
- Fitness Training and Programming for Health and Fitness
- Performance Analysis
- Coaching for Performance and Fitness
- Leadership in Sport
- Sport Psychology
- Professional Development

Sport with Basketball

1 year
Level 1

Location: Middleton

Entry requirements: No formal qualifications

[FIND OUT MORE>](#)

Sport with Basketball

1 year
Level 2

Location: Middleton

Entry requirements: 4 GCSEs grade 3 or above to include English and Maths

[FIND OUT MORE>](#)

Sport with Basketball

1 year
Level 3

Location: Middleton

Entry requirements: 4 GCSEs grade 4 or above to include English and Maths. NVQ Level 2 or VRQ Level 2

[FIND OUT MORE>](#)





Click for a
**VIRTUAL
TOUR...**

Your learning ladder

Level 4: Foundation Degree
(FdSc) Sports Coaching,
Higher Education,
Apprenticeship

UNIFORMED PUBLIC SERVICES

The public services industry is very diverse and offers a world of opportunity. It includes the armed forces and emergency services including the Police force, Fire and Rescue Service, Navy, RAF, as well as encompassing security organisations, the Prison Service, HM Customs and Excise and others. It's a great choice for those considering a career in any of the uniformed services at officer or technical trade level.

Due to the number of our learners who progress directly into employment within this sector, Hopwood Hall College is now a **platinum partner** to several armed and emergency services.

Note: You will be expected to join our gym and to take part in extra curriculum activities such as voluntary work and local sporting activities.

The Level 3 course is designed as a two year study programme but there is an option to undertake a Diploma in one year instead.

Course content:

- Team working Skills
- Understanding discipline
- Physical preparation and fitness
- Outdoor and adventurous expeditions
- Equality and diversity
- Citizenship
- Responding to emergency service incidents
- Communication and technology
- Visits to a variety of public service organisations with talks by guest speakers from the industry
- Residentials at public service establishments, including expedition weekends
- Health & Safety
- Values and Standards
- Volunteering
- Map reading and Navigation
- Adventurous activities
- Emergency planning & response
- Preparation for Higher Education

Diploma for Entry to the Uniformed Services

1 year
Level 1

Location: Middleton

Entry requirements: 3 GCSE grade 2 or above

[FIND OUT MORE>](#)

Diploma for Entry to the Uniformed Services

1 year
Level 2

Location: Middleton

Entry requirements: 4 GCSE's grade 3 and above to include English and Maths

[FIND OUT MORE>](#)

Diploma for Entry to the Uniformed Services

2 years
Level 3

Location: Middleton

Entry requirements: 4 GCSEs grade 4 or above to include English or Maths. BTEC Level 2 Qualification, NVQ Level 2 or VRQ Level 2

[FIND OUT MORE>](#)

Extended Diploma for Entry to the Uniformed Services

2 years
Level 3

Location: Middleton

Entry requirements: 5 GCSEs grade 4 or above to include English and Maths

[FIND OUT MORE>](#)

Extended Diploma in Policing

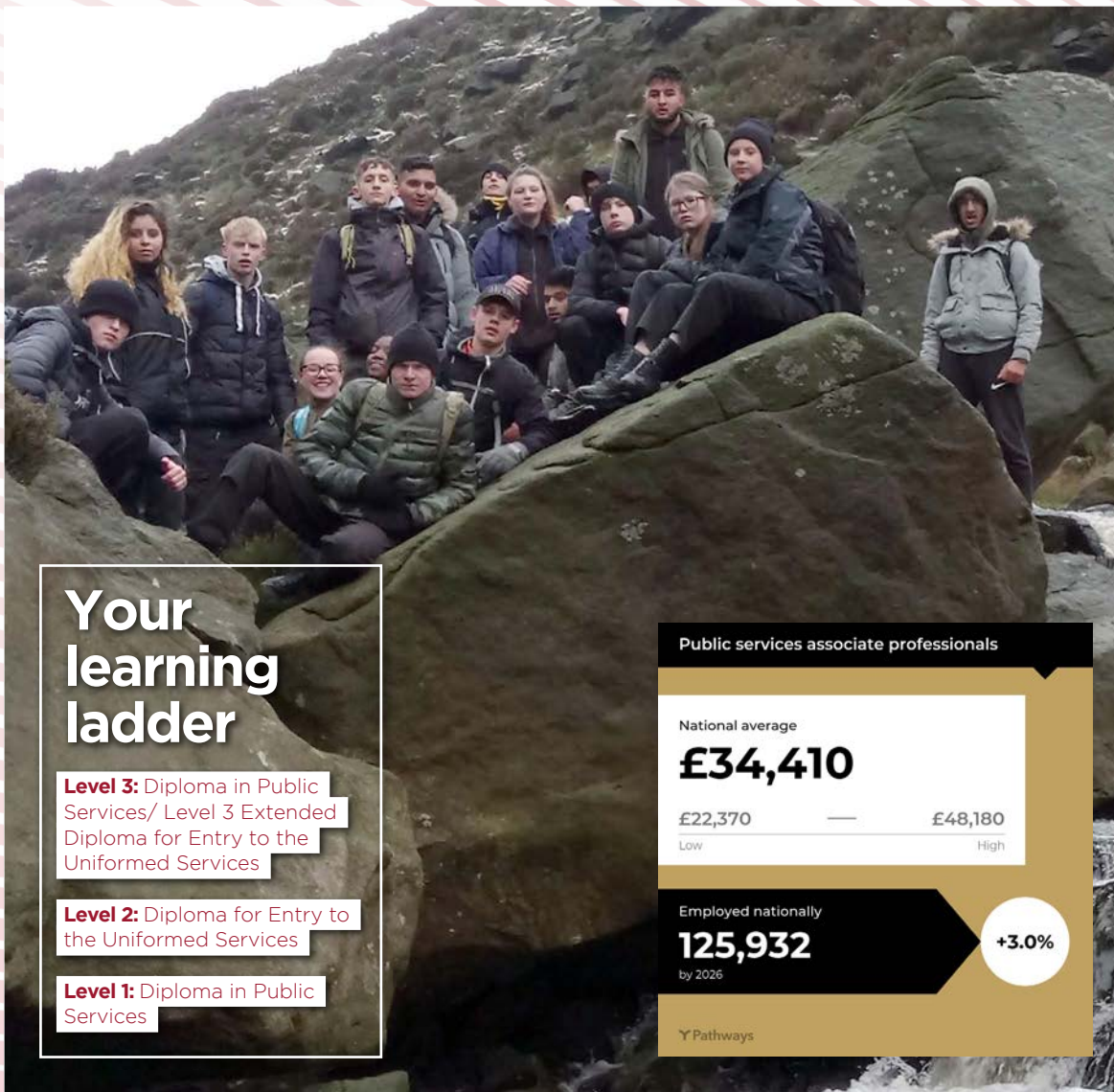
2 years
Level 3

Location: Middleton

Entry requirements: 5 GCSE's grade 4 or above to include English & Maths

[FIND OUT MORE>](#)

Click for a
**VIRTUAL
TOUR...**



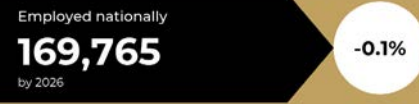
Your learning ladder

Level 3: Diploma in Public Services/ Level 3 Extended Diploma for Entry to the Uniformed Services

Level 2: Diploma for Entry to the Uniformed Services

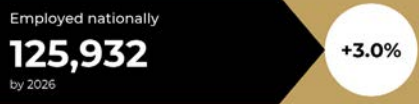
Level 1: Diploma in Public Services

Police officers (sergeant and below)



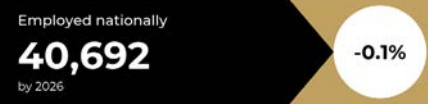
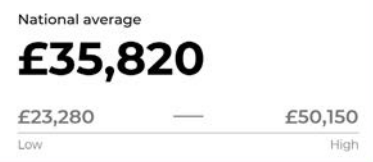
Y Pathways

Public services associate professionals



Y Pathways

Fire service officers (watch manager and be...



Y Pathways

HEALTH & SOCIAL CARE

These courses are ideal if you would like to develop a career working within the health and social care sector and progress to university or employment. You'll develop the knowledge and skills needed when working with adults in health and social care environments. The courses cover a wide range of areas including supporting individuals with their physical and emotional care, daily living needs and health care procedures.

Courses consist of academic work within the college and practical work within the industry and entry is subject to a Disclosure and Barring Service (DBS) check.

Course content:

- Creative & Leisure Activities
- Health & Social Care Needs
- Working in a Team
- Effective communication
- Human Lifespan Development
- Healthy Living
- Creative & Therapeutic Activities
- Equality Diversity and Rights
- Work in Health and Social Care
- Anatomy and physiology

- Enquiries into Current Research in Health and Social Care
- Meeting Individual Care and Support Needs
- Principles of Safe Practice in Health and Social Care
- Promoting Public Health
- Physiological Disorders and their Care
- Caring for Individuals with Dementia
- Nutrition for Health & Social Care
- Safeguarding vulnerable adults
- Psychological and Sociological perspectives

THE HEALTH & SOCIAL CARE SECTOR IS THE SECOND LARGEST EMPLOYER IN THE REGION WITH 250,000 PEOPLE WORKING ACROSS GREATER MANCHESTER

**Apprenticeship programme available
- see page 51**

BTEC Diploma in Health and Social Care

1 year
Level 1

Location: Middleton or Rochdale campus

Entry requirements: No formal qualifications

MIDDLETON CAMPUS: [FIND OUT MORE>](#)

ROCHDALE CAMPUS: [FIND OUT MORE>](#)

BTEC Extended Certificate in Health & Social Care

1 year
Level 2

Location: Middleton or Rochdale campus

Entry requirements: 4 GCSEs grade 3 or above to include English and Maths

MIDDLETON CAMPUS: [FIND OUT MORE>](#)

ROCHDALE CAMPUS: [FIND OUT MORE>](#)

See our T-Levels section starting on page 14 for more information on the T-Level routes in Health.

BTEC National Extended Diploma in Health and Social care

2 Years
Level 3

Location: Middleton or Rochdale campus

Entry requirements: 4 GCSEs grade 4 or above to include English and Maths. BTEC Level 2 qualification, NVQ Level 2 or VRQ Level 2

MIDDLETON CAMPUS: [FIND OUT MORE>](#)

ROCHDALE CAMPUS: [FIND OUT MORE>](#)

T-Level in Health

Occupational Specialism: Adult Nursing

2 years
Level 3

Location: Rochdale campus

Entry requirements: 4 GCSEs at grade 5 and above - must include English, Maths & Science

[FIND OUT MORE>](#)

T-Level in Health

Occupational Specialism: Mental Health Team

2 years
Level 3

Location: Rochdale campus

Entry requirements: 4 GCSEs at grade 5 and above - must include English, Maths & Science

[FIND OUT MORE>](#)

Click for a
**VIRTUAL
TOUR...**

Your learning ladder

Level 3: BTEC Extended Diploma in Health and Social Care

Level 2: BTEC First Extended Certificate

Level 1: BTEC Diploma in Health and Social Care

Nursing professionals

National average

£31,380

£20,400

Low

£43,930

High

Employed nationally

815,100

by 2026

+4.1%

Pathways

ART AND DESIGN

If you're passionate about art and design then our creative art courses provide a perfect stepping stone into a myriad of creative art and design opportunities at a higher level of study or employment within Creative Industries. On application you will need to demonstrate your enthusiasm for art through a current portfolio of work, clearly illustrating your drawing skills and creativity.

Throughout the year you will study a range of disciplines including fine art and textiles and gain knowledge about contemporary art practice and art history. You will learn how to use digital processes in order to enhance your traditional artwork.

You will also take part in trips and visits to various galleries and museums, as well as carrying out research on the possibilities of working in the art and design industry. Art and Design courses

are lively, innovative and train you in both creative and technical aspects of art.

As part of a very broad curriculum these courses provide the opportunity to undertake live projects with an emphasis on work related learning.

You will be given the opportunity to take part in competitions with outside agencies, which in previous years have included Touchstones Art Gallery, Bolton University and a range of local businesses.

Course content:

- Contextual references in art & design
- 3D/2D visual communication
- Building an art and design portfolio
- Working in the art and design industry
- Textiles
- Graphics
- Drawing
- Painting
- Printmaking
- Surface relief
- 3D design, crafts and fine art
- Photography
- Digital Imaging/Concept Art

UAL Diploma in Art & Design

1 year
Level 1

Location: Rochdale campus

Entry requirements: Entry Level of Functional Skills English and Maths

[FIND OUT MORE>](#)

UAL Diploma in Art & Design

1 year
Level 2

Location: Rochdale campus

Entry requirements: 4 GCSEs grade 3 or above to include English and Maths

[FIND OUT MORE>](#)

BTEC Extended Diploma

2 years
Level 3

Location: Rochdale campus

Entry requirements: 4 GCSEs grade 4 or above to include English and Maths. BTEC Level 2 qualification, NVQ Level 2 or VRQ Level 2

[FIND OUT MORE>](#)



Morgan Fay: After finishing her course in Art, Morgan secured a place at the University of Bolton to study BA Surface Pattern.

On completion, Morgan gained employment as a designer with a local interior design company.

Click for a
VIRTUAL
TOUR...

Your learning ladder

Level 4: HNC/HND
Art & Design

Level 3: Art & Design,
Graphic Design, Games
Development, Media
Production, Access
to Art

Level 2: Art & Design,
Graphic Design, Media
Production, Games
Development,

Level 1: Art & Design

Artists

National average

£29,190

£18,980

Low

£40,870

High

Employed nationally

63,351

by 2026

+0.6%

Y Pathways

GRAPHIC DESIGN

If you want to develop the skills required to enable you to work within the graphic design industry and you have a passion for creative work, enjoying creating digital images, designs and photographs then this is the course for you. You will work in a professional environment and will be introduced to industry software.

The Level 2 course is one year and designed to act as an introduction to graphic design, developing your skills with design ideas generation, photography and computer design skills. You will work on graphic design briefs and learn to explore design techniques and processes and bring this into your own work.

The two year Level 3 course further develops your skills combining technical and creative approaches. Students are encouraged to develop their own individuality whilst working on live design briefs and create exciting, imaginative and professional design work for external clients.

Courses are validated by BTEC Creatives.

Course content:

Graphic design projects

- Industry live briefs
- 3D/2D visual communication
- Typography
- Mixed media
- Traditional and Digital image manipulation
- Photography Studio practice
- Presentation skills
- Building a professional design portfolio
- The opportunity to take part in the World Skills Competition

Facilities and Resources

- * Two Graphic design labs
- * Professional Photography equipment
- * Industry standard design software Adobe CC
- * Professional mockup creation software such as Substance Painter

UAL Diploma in Graphic Design

1 year
Level 2

Location: Rochdale campus

Entry requirements: 4 GCSEs grade 3 or above to include English and Maths

[FIND OUT MORE>](#)

National Extended Diploma in Graphic Design

1 year
Level 3

Location: Rochdale campus

Entry requirements: 4 GCSEs grade 4 or above to include English and Maths. BTEC Level 2 qualification, NVQ Level 2 or VRQ Level 2

[FIND OUT MORE>](#)

Click for a
**VIRTUAL
TOUR...**

Your learning ladder

Level 4: HNC Game Art & Development and HNC Film, Level 4 HND Art & Design

Level 3: Graphic Design, Art & Design, Games Development, Media Production, Access to Art

Level 2: Graphic Design, Art & Design, Media Production, Games Development

Level 1: Art & Design

Graphic and multimedia designers

National average

£26,890

£17,480

Low

£37,640

High

Employed nationally

102,770

by 2026

+0.6%

Y Pathways

GAMES DEVELOPMENT

The world of video games is incredibly exciting with many different job roles and career paths. Here at Hopwood, we will provide you with a strong visual and creative base and you'll have access to four industry standard PC gaming labs with facilities including; a 3D printer, green screen, sound recording suite, Wacom Tablets, Oculus Touch and VIVE VR technology.

From the start you will design, develop and make a range of games incorporating both 2D and 3D, producing all assets from the story and characters to sounds, sprites, animations, 3D models and more. You will be encouraged to 'play', to experiment, to understand and question the nature of games, expressing your concepts and ideas through personal project work and live briefs using industry standard software and hardware all set within the framework of a games design studio.

Course content:

- Games design theory & practice
- 2D & 3D games engines
- 3D modelling
- Traditional Texturing Techniques
- 2D & 3D animation
- Concept Art/Digital Painting techniques for objects, characters and environments
- Computer game story development
- Visual Effects and Architectural Visualisation
- Game Engine Based Lighting and Rendering

- Physics Based Texturing and Rendering
- Modular Level Design
- Industry Live Briefs
- The opportunity to take part in the World Skills Competition

The Level 2 course is a one year study programme where you can develop the game making skills needed to create a 2D game.

The Level 3 course is designed to build and develop skills to an industry standard in leading software needed to prepare learners for university and a career in the Games industry. Please ask for more details at your interview.

BTEC Diploma in Games Development

1 year
Level 2

Location: Rochdale campus

Entry requirements: 4 GCSE's grade 3 or above to include English and Maths

[FIND OUT MORE>](#)

BTEC Extended Diploma in Creative Practice: Games

2 years
Level 3

Location: Rochdale campus

Entry requirements: 4 GCSEs grade 4 or above to include English and Maths. BTEC Level 2 qualification, NVQ Level 2 or VRQ Level 2

[FIND OUT MORE>](#)



Mark McManus: During his course, Mark learned a lot about different types of software and how they are used professionally.

He also credits the course with developing his ability to work with others. Now, Mark works as Games Designer for Supermassive Games in London. He is responsible for daily scrums, working with the design and art teams and fixing bugs.



Your learning ladder

Level 5: HNC/HND
Games Development

Level 4: HNC/HND
Games Development

Level 3: Games Development,
Media Production, Art &
Design, Graphic Design

Level 2: Games Development,
Media Production, Graphic
Design, Art & Design

Level 1: Creative Media

Click for a
**VIRTUAL
TOUR...**

Programmers and software development profes...

National average

£44,560

£28,960

Low

£62,380

High

Employed nationally

310,434

by 2026

+2.5%

Y Pathways

ESPORTS

The Esports industry is a fast-growing global industry. Esports is defined as organised competitive gaming, which is human versus human, either as individuals or in teams. This suite of qualifications includes a breadth of transferrable skills that enable learners to experience Esports in different areas to aid their progression to employment, directly or via further study.

Esports offers a unique opportunity to learn concepts in the context of multiple skills and subject areas at once. It aligns social, physical, mental and financial skills into one qualification to deepen and expand learning.

The course is perfect for you if you are keen to develop a career in this fast-growing industry. You will have the opportunity to study Esports at Level 2 or level 3 and the qualification is endorsed by the British Esports Association as being suitable for learners as an introduction to Esports.



BTEC Diploma in Esports

1 year
Level 2

Location: Rochdale campus

Entry requirements: 4 GCSEs grade 3 or above to include English and Maths

[FIND OUT MORE>](#)

Course Content

- Compete in the National Esports league as part of Hopwood Hawks
- Esports Games, Teams and Tournaments
- Establishing an Esports Organisation
- Streaming for Esports
- Plan for an Esports Event
- Start an Enterprise in Esports
- Game Design
- Positive Health and Well-Being
- Visits to gaming competitions and Networking events
- Shout casting
- Video Production
- Coaching
- And many more topics

BTEC National Diploma in Esports

2 years
Level 3

Location: Rochdale campus

Entry requirements: 4 GCSEs grade 4 or above to include English and Mathematics. BTEC Level 2 qualification, NVQ Level 2 or VRQ Level 2.

[FIND OUT MORE>](#)

The Level 2 course is a one-year study programme, where you will develop a wide understanding of Esports, and all the distinct aspects associated with the sport. You will also build transferable skills in Communication, Self-management, Marketing, Branding and Business Enterprise.

The Level 3 course is a two-year study programme that is designed to build and develop skills needed to prepare you for industry and progression onto university.



BTEC Extended Diploma in Esports

2 years
Level 3

Location: Rochdale campus

Entry requirements: 4 GCSEs grade 4 or above to include English and Maths. BTEC/UAL Level 2 qualification, NVQ Level 2 or VRQ Level 2

[FIND OUT MORE>](#)



Your learning ladder

BSc Esports Production, BA Hons Esports Management or other related degree

Level 3: Esports

Level 2: Esports

Level 1: Creative Media

Employment opportunities

2 million people

currently employed within the arts industry

Typical job roles include: Shout casting, Coaching Professional Esports Competitor, Branding, Marketing, Professional Streamer, Media content producer, Graphic designer, Advertising, Sales, PR, Branding, Business Development, Merchandising, Social Media

MEDIA PRODUCTION

This course is perfect for you if you aim to work in the TV and Film industries. Units focus on the creative and technical aspects of TV and film. Courses are validated by BTEC Creatives.

The programme is designed to prepare you for employment in the exciting world of TV and Film and its related industries such as audio production, broadcast, marketing and PR.

You will also undertake many industry related enrichment visits such as post production houses, film and TV sets and tours to enhance your learning experience.

Course content:

- Short film production
- TV studio work
- Multi Camera Production, Photography
- Audio recording and editing
- Sound Design for film, Podcasting
- Documentary making
- Promotional and corporate video project
- Video editing
- Music video production
- Script writing
- The opportunity to take part in the World Skills Competition

BTEC Diploma in Creative Media

1 year
Level 1

Location: Rochdale campus

Entry requirements: Entry Level of Functional Skills English and Maths
[FIND OUT MORE>](#)

BTEC Diploma in Creative Media Skills

1 year
Level 2

Location: Rochdale campus

Entry requirements: 4 GCSEs grade 3 or above to include English and Maths

[FIND OUT MORE>](#)

BTEC Diploma in Creative Media

1 year
Level 3

Location: Rochdale campus

Entry requirements: 4 GCSEs grade 4 or above to include English and Math's. BTEC/UAL Level 2 qualification, NVQ Level 2 or VRQ Level 2

[FIND OUT MORE>](#)

BTEC Extended Diploma in Creative Practice: Media Production

2 years
Level 3

Location: Rochdale campus

Entry requirements: 4 GCSEs grade 4 or above to include English and Mathematics.

[FIND OUT MORE>](#)



Aaron Diskin: During his studies, Aaron developed a passion for writing and started his own Oldham AFC match report Facebook page - which averaged 1000 views per report. His page caught the attention of the BBC where he now works in a full time Runner role.

Your learning ladder

Level 5: HNC/HND TV and Film Production

Level 4: HNC/HND TV and Film Production

Level 3: Creative Media

Level 2: Creative Media

Level 1: Creative Media

Click for a
VIRTUAL TOUR...



Photographers, audio-visual and broadcastin...

National average

£23,730

£15,430

Low

£33,220

High

Employed nationally

104,040

by 2026

+0.6%

Pathways

ENGLISH FOR SPEAKERS OF OTHER LANGUAGES (ESOL)

If your first language is not English and you want to improve your written and spoken English, this course is for you. Covering the four main skills of speaking, listening, reading and writing, you will gain nationally recognised qualifications in English language. You also have the opportunity to gain national qualifications in ICT & Maths.

In addition, you will learn about UK culture and take part in events to celebrate your own. You'll also take part in fun competitions to develop job interview skills and entrepreneurial skills, and develop the confidence to live, study and work in the UK successfully.

Course content:

- Write emails, reviews, reports, job application letters and supporting statements
- Learn about different vocational areas in the college to help with progression/career choices as language skills develop
- Speak to and understand doctors, work colleagues, teachers and members of the community.
- Read and understand information, news, instructions, books and websites
- Make friends using English
- Develop employability skills
- Take part in enrichment opportunities
- Develop study skills

ESOL

1 year/2 years depending on progress and attendance.
Level dependent on assessment

Location: Rochdale campus

Entry requirements: No formal qualifications

FIND OUT MORE>

Employers we work with on a regular basis:

- Rochdale Food Bank
- Rochdale Soup Kitchen
- Treesponsibility
- Macfest
- National Careers Service
- Rochdale Council Environment Team



Magda Paszkiewicz Initially, Magda came to the College to improve her English and quickly became one of ESOL's best students, progressing onto a Level 3 & 4 Education and Training course.

Magda credits her lecturers with inspiring her to progress and become an ESOL lecturer herself.



Your learning ladder

Level 2

Level 2 ESOL, Level 1 Functional skills English, Opportunity to complete Functional skills ICT, Opportunity to complete GCSE Maths, Community Interpreting

Level 1

Level 1 ESOL, Functional Skills Maths or GCSE Maths, Opportunity to complete Functional skills English, ICT, Employability skills, Work Experience, Community Interpreting

Entry

Entry 1, 2, 3 ESOL, Functional skills Maths, ICT, Employability skills, Work Experience

Pre Entry

Beginners to ESOL, E1 Award in English and Maths, Employability skills, Work Experience

Employment opportunities

Studying ESOL at Hopwood Hall College opens up a world of opportunities in both your personal and professional life. Gain a good level of spoken and written English and get to where you want to be by studying an ESOL course.

HAIR AND BEAUTY INTRODUCTORY LEVEL

These courses are perfect for people who want to develop hair and beauty therapy skills and knowledge and combine it with industry experience gained by working in a realistic salon environment. You will have the opportunity to apply the skills you learn in our fantastic training rooms, in our very own contemporary Riverside Salon where we offer hairdressing, beauty therapy, complementary therapy and nail treatments to our regular client base.

Entry 3 Certificate: An Introduction to the Hair and Beauty Sector

Our entry 3 course will give you a basic introduction to the hair and beauty sector, equipping you with the knowledge, practical skills, and employability skills to progress onto further courses in the hair and beauty department.

This course will introduce you to the hair and beauty sector and develop your understanding of the range of services and treatments on offer. It will enable you to present a professional image in a salon environment and communicate and behave professionally.

Units:

- Introduction into the hair and beauty industry
- Presenting a Professional Image in a Salon
- Skin Care
- Hand care
- Shampoo and Conditioning
- Hair Plaiting
- Create an Image using colour for the hair and beauty sector

Entry requirements - No formal entry requirements however you will be expected to develop your English and maths qualifications alongside your course. Basic IT skills would be beneficial.

Progression route- Level 1 Diploma in an Introduction to the Hair and Beauty Sector

Work experience - No specific work experience required or undertaken, however there are ongoing practical sessions which enable you to gain a broad experience of all basic industry elements.



Level 1 Diploma in an Introduction to the Hair and Beauty Sector

Do you aspire to work as a hairdresser or beauty therapist? Want to kickstart your career in the hair and beauty industry but you're not sure where to start? Our Level 1 Diploma in an Introduction to the Hair and Beauty Sector is the perfect place for you to start.

You'll learn skills including shampooing and conditioning, skincare, manicures and pedicures, and plaiting and twisting, as well as the key attributes needed for success in the industry such as communication, team work, and how to provide excellent customer service.

This course is taught at our Rochdale campus, located in Rochdale Town Centre, Greater Manchester.

This course offers 2 different pathways, you can either choose hairdressing pathway or beauty therapy pathway.

Hairdressing pathway

- Shampoo and condition hair
- Health and Safety
- Twisting and Plating hair
- Drying and Styling techniques
- Teamwork
- Working in Hairdressing

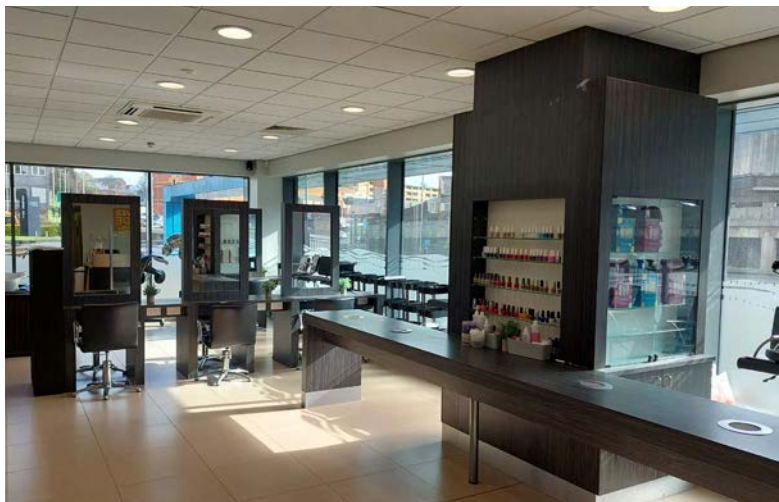
Beauty Therapy pathway

- Working in beauty related industries
- Health and safety
- Skincare
- Manicure treatments
- Pedicure treatments
- Make-up

Work Experience - During your course you will complete work experience on a weekly basis for 3 hours in our prestigious Riverside salon.

Entry requirements - 4 GCSE grade 1-2 to include English and Maths

Progression route - Level 2 Hairdressing Level 2 Barbering, Level 2 Beauty Therapy Level 2 Hair and Media Make-up, apprenticeship based on achieving required Level 1 Functional Skill in English and Maths.



BEAUTY THERAPY

These courses are perfect for those who want to develop beauty therapy skills and knowledge, plus industry experience, through working in a realistic salon environment. You will have the opportunity to develop the skills learned in the training rooms, in our own Riverside Salon and also practice many new treatments within the beauty therapy field.

Level 2 in Beauty Therapy - this is the starting point for a career in beauty therapy. It is a one year course where you can expect to study:

- Anatomy and physiology
- Facial treatments
- Manicure & pedicure services
- Light cured gel polish
- Hair removal
- Lash and brow treatments
- Lash lifting
- Head massage

Level 3 Beauty Therapy is the progression route for a career in beauty therapy and spa treatments.

It includes:

- Body massage
- Facial electrotherapy
- Microdermabrasion
- Tanning
- Stone therapy

Level 4 will prepare you for further study such as the Foundation Degree course.

It will also give you an excellent qualification to use when looking for work in the beauty industry.

You will gain advanced beauty therapy skills which will support you in achieving your career or study goals. It includes:

- Quality management of client care in the hair and beauty sector.
- Salon management
- Laser and Light treatment for skin rejuvenation
- Enhance appearance using micro-pigmentation treatment
- Laser and light treatments for hair removal

NB. This course is for students aged 18+

Diploma in Beauty Therapy

1 year
Level 2

Location: Rochdale campus

Entry requirements: 4 GCSEs grade 3 or above to include English and grade 2

Progression: Level 3 Beauty Therapy or employment, based on achieving GCSE English and Maths

[FIND OUT MORE>](#)

Technical Certificate in Beauty Therapy

1 year
Level 2

Location: Rochdale campus

Entry requirements: 4 GCSEs grade 4 or above to include English and Maths

Progression: Level 3 Diploma in Beauty Therapy, employment as junior therapist

[FIND OUT MORE>](#)

Diploma in Beauty Therapy

1 year
Level 3

Location: Rochdale campus

Entry requirements: Level 2 Beauty Therapy and 4 GCSEs grade 4 or above to include English or Maths

Progression: Higher Education, employment or Level 4 Advanced Diploma in Beauty Therapy Techniques

[FIND OUT MORE>](#)

Click for a
**VIRTUAL
TOUR...**

Your learning ladder

Level 4: Certificate in Skin Needling, Certificate in Skin Peeling

Level 3: Beauty Therapy, Special Effects Theatrical Make-up & Hair, Hairdressing

Level 2: Beauty Therapy, Hair & Media Make-up

Level 1: Introduction to the Hair & Beauty Sector

Beauticians and related occupations

National average

£12,590

£9,440

Low

£16,360

High

Employed nationally

101,980

by 2026

-0.6%

Pathways

HAIRDRESSING

These courses are perfect if you want to gain hairdressing skills and knowledge, plus industry experience, through working in a realistic salon environment. You will have the opportunity to put into practice the skills you learn in our fabulous training rooms in our very popular 'Riverside Salon' and also practice new fashion and current trends within hairdressing.

Course Content:

Level 2 is the starting point for a career in hairdressing. It's a one year programme which includes:

- Consultation
- Shampooing and conditioning
- Styling, setting and dressing hair
- Plaiting and twisting
- Basic cutting techniques
- Colouring and lightening hair
- Cutting men's hair

Level 3 is the progression route for a career in hairdressing and includes:

- Cutting hair using a combination of techniques
- Creatively colouring and lightening hair
- Creatively styling and dressing hair
- Hair colour correction



Lucy Atherton "My favourite bits from college are the friends I made and the tutors I have remained close with post-College. I had such a fun time whilst studying, the whole beauty and hairdressing floor was the friendliest place to be."

Preparing to work in the Hair and Beauty Industry

1 year
Entry Level

Location: Rochdale campus

Entry requirements: No formal entry requirements

Progression: Level 1 Hair and Beauty

[FIND OUT MORE>](#)

Introduction to the Hair and Beauty Sector

1 year
Level 1

Location: Rochdale campus

Entry requirements: 4 GCSEs grade 1 or 2 to include English and Maths

Progression: Level 2 Hairdressing, Hair and Media Make-up, barbering or Hairdressing Apprenticeship

[FIND OUT MORE>](#)

Level 2 Technical Certificate in Hairdressing

1 year
Level 2

Location: Rochdale campus

Entry requirements: 4 GCSEs grade 4 or above to include English or Maths

Progression: L3 Diploma in Hairdressing

[FIND OUT MORE>](#)

Diploma in Hairdressing

1 year
Level 3

Location: Rochdale campus

Entry requirements: 4 GCSEs grade 4 or above to include English or Maths. You will also have had to complete either an NVQ or VRQ Level 2 Diploma in Hairdressing to gain the required skills and knowledge to begin the Level 3

Progression: Higher Education, employment or training

[FIND OUT MORE>](#)

Employers we work with on a regular basis include:

- Rachel Alex Hair and Beauty
- Holly Jayne Hair Establishment
- The Hairdressing Room



Your learning ladder

Level 3: Special Effects
Theatrical Make-up & Hair,
Hairdressing

Level 2: Hair & Media Make
Up, Ladies & Men's
Hairdressing, Barbering

Level 1: Introduction to
the Hair & Beauty Sector

Hairdressing and beauty salon managers and ...

National average

£28,380

£18,450

Low

£39,730

High

Employed nationally

33,398

by 2026

+2.2%

Pathways

BARBERING

These courses are perfect for you if you would like to develop barbering skills and knowledge, and gain industry experience, through working in a realistic salon environment. You will get the opportunity to put into practice the skills you learn in our fantastic training rooms in our very popular 'Riverside Salon'. You'll also practice new fashion and current trends within barbering.

Level 2 aims to provide you with a range of essential and practical skills and knowledge, which will lead to employment or further training within the barbering industry. It includes:

- Styling men's hair
- Shampoo and condition the hair and scalp
- Colour and lighten hair
- Cut men's hair
- Cut facial hair
- Provide scalp massage services
- Relax African type hair

Level 3 covers advanced practical skills and essential knowledge for working within the barbering industry and includes:

- Healthy and safety practice in the salon
- Consultation support for colleagues on hair services
- Cut men's hair to create a variety of looks and trends
- Cut facial hair to create a variety of looks and trends
- Provide shaving and face massage services

Preparing to work in the Hair and Beauty Industry

1 year

Entry Level

Location: Rochdale campus

Entry requirements: No formal entry requirements

Progression: Level 1 Hair and Beauty

[FIND OUT MORE>](#)

Diploma in Barbering

1 year

Level 2

Location: Rochdale campus

Entry requirements: 4 GCSEs grade 3 or above to include English and 2 in Maths

Progression: Level 3 Barbering

[FIND OUT MORE>](#)

Certificate in Barbering

1 year

Level 3

Location: Rochdale campus

Entry requirements: 4 GCSEs grade 4 or above to include English or Maths plus L2 in Barbering

Progression: Higher Education, employment or training

[FIND OUT MORE>](#)

Click for a
**VIRTUAL
TOUR...**

Your learning ladder

Level 3: Certificate in Barbering

Level 2: Diploma in Barbering

Level 1: Preparing to work in the Hair and Beauty Industry

Hairdressing and beauty salon managers and ...

National average

£28,380

£18,450 — £39,730
Low High

Employed nationally

33,398
by 2026

+2.2%

Pathways

HAIR AND MEDIA MAKE-UP

These courses are perfect if you aspire to work in the areas of theatrical, fashion, TV and photographic make-up and make-up retail. You'll gain real experience working on live projects and client briefs as well as entering competitions. This will give you the opportunity to showcase your creativity and ability to work under pressure. These one year courses will give you a recognised qualification that demonstrates your knowledge, creative skills and understanding of the industry.

Level 2 includes the study of:

- Make-up application
- Eye treatments
- Create an image
- The art of photographic make-up
- Body art design
- Spray tanning
- The art of colouring hair
- The art of dressing hair
- Make and style a hair addition

Level 3 includes the study of:

- Creative hairdressing design skills.
- Design and apply face and body art
- Fashion and photographic make up
- Apply airbrush make up
- Media make up
- Apply prosthetic piece and bald caps
- Style and fit postiche
- Style and dress hair

We work with a number of local employers on a regular basis including Samantha Helen Make-up artist



Preparing to work in the Hair and Beauty Industry

1 year
Entry Level

Location: Rochdale campus

Entry requirements: No formal entry requirements

Progression: Level 1 Hair and Beauty

[FIND OUT MORE>](#)

Introduction to the Hair and Beauty Sector

1 year
Level 1

Location: Rochdale campus

Entry requirements: 4 GCSEs grade 1 or 2 to include English and Maths

Progression: Level 2 Hair and Media make-up

[FIND OUT MORE>](#)

Diploma in Hair and Media Make-up

1 year
Level 2

Location: Rochdale campus

Entry requirements: 4 GCSE grade 3 or above include English and Maths

Progression: L3 Diploma in Theatrical special effects, hair and media make-up or L3 Diploma in Hair and media make-up

[FIND OUT MORE>](#)

Technical Certificate in Make-up Artistry

1 year
Level 2

Location: Rochdale campus

Entry requirements: 4 GCSE grade 4 or above include English and Maths

Progression: L3 Diploma in Theatrical special effects, hair and media make-up or L3 Diploma in Hair and media make-up

[FIND OUT MORE>](#)

Special Effects Theatrical Make-Up & Hair

1 year
Level 3

Location: Rochdale campus

Entry requirements: 4 GCSEs grade C/4 or above to include English or Maths plus an NVQ Level 2 or VRQ Level 2 in Hair and Media Makeup.

Progression: Higher Education or employment

[FIND OUT MORE>](#)

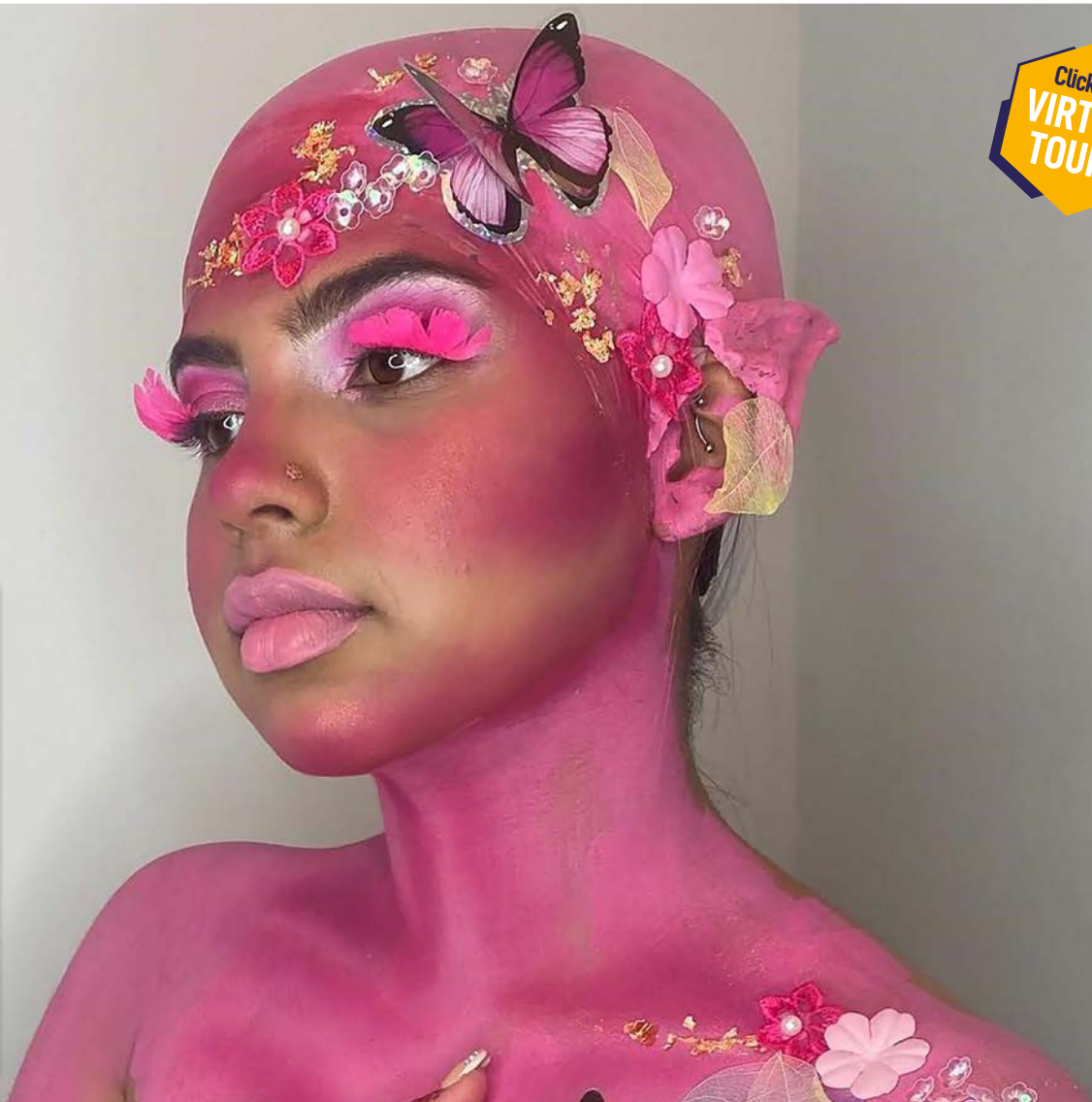


Your learning ladder

Level 3: Special Effects
Theatrical, Make-up & Hair,
Hair and Media Make-up

Level 2: Hair and Media
Make-up

Level 1: Introduction to
the Hair & Beauty Sector



EDUCATION & CHILDCARE

We offer a comprehensive portfolio of competence-based study programmes to meet the needs of diverse learners, the community and local employers ranging from foundation level through to Level 3. A variety of modes of study are available including full-time & part-time routes that will develop the skills, knowledge and behaviours of young people and adults.

In addition to all core programmes, industry work placement experience is a mandatory requirement of the Education & Childcare curriculum at level 2, 3 and higher. All learners complete two full days a week in an Education & Childcare/ school setting and practical skills are assessed in the workplace by a vocational competent assessor.

All learners on a foundation programme are required to complete 30 hours of work experience.

Course content includes:

- Health and well-being
- Legislation, frameworks and professional practice
- Play, development and learning
- Professional development
- Observation, assessment and planning
- Working in partnership
- Keeping children safe
- Wider context
- Supporting children with additional needs
- Reflective practice
- Children's development outdoors
- Parents, families and carers
- Supporting Education
- Safeguarding, protection and welfare of children
- Equality, diversity and inclusive practice
- Care and health needs
- Career development
- Supporting emergent literacy
- Supporting emergent Maths
- Preparing for school readiness
- International perspectives
- Promoting positive behaviour in Education & Childcare Settings
- Partnership working
- Child Development
- Special Educational Needs and Disability
- Behaviour Management
- Health and Safety

Employers who support our learners with industry work placement experience:

- Bright Stars
 - Happy Jacks PDN
 - Teddy Bear Nursery
 - Supertots PDN
 - Sandbrook Community Primary School
 - Twinkletoes PDN
 - Smallworld PDN
 - Seeros Daycare Nursery
 - The Willows PDN
 - Sunny Brow Nursery School
- And many more...



NCFE Diploma in Caring for Children

1 year
Level 1

Location: Rochdale campus

Entry requirements: 3 GCSEs grade 2 or above

FIND OUT MORE>

NCFE CACHE Level 2 Diploma for the Early Years Practitioner

1 year
Level 2

Location: Rochdale campus

Entry requirements: 4 GCSEs grade 3 or above to include English and Maths

FIND OUT MORE>

See our T-Levels section starting on page 14 for more information on the T-Level

T-Level Technical Qualification in Education and Early Years

2 years, Level 3

Location: Rochdale campus

Entry requirements

5 GCSEs grade 5 or above to include English and Maths.
BTEC Level 2 Diploma Level 2 or VRQ Level 2

The qualification has two occupational specialism components:

- **Early Years Educator**
- **Assisting Teaching**

In the 2nd year of the programme you will have the opportunity to choose your preferred Occupational Specialism.

Your learning ladder

Level 3: T-Level Technical Qualification in Education and Childcare

Level 2: Diploma for the Early Years Practitioner

Level 1: Diploma for Caring for Children

Child and early years officers

National average

£24,170

£15,710

Low

£33,840

High

Employed nationally

41,435

by 2026

+4.2%

Y Pathways



*Nathan
Ashurst*

Studied: T-Level
Education & Childcare

School: Falinge Park
High School

Now: Apprentice
Disability Football
Coach at Rochdale
AFC Community Trust

HOSPITALITY & CATERING

The demand for skilled workers in the catering and hospitality sector is higher than ever before and Greater Manchester's visitor economy supports around 85,000 jobs. If you're a 'people person' and you like variety in your work, then opportunities and rewards are there for the taking in the hospitality & catering sector, where you could be running your own business or excelling in your career within just a few years.

Your study programme will be based on your career choice, interests and individual needs. Find your style with our Professional Chef, programmes that will give you the foundations to develop your skills, knowledge and behaviours in our state of the art professional kitchens using modern technologies and techniques with industry experienced tutors.

Programme content

Alongside the training and skills development in everything from vegetables, fish, meat and poultry to baking, patisserie, cake decorating and chocolatier, you'll get the opportunity to be part of our professional team in the commercial areas such as the College Refectory at both Rochdale and Middleton Campuses.

You will have access to a range of additional learning opportunities alongside your main qualification, guaranteeing you the best chance of success and progression in your future career.

- A formal qualification
- English & maths
- Industrial placement & work experience
- Enrichment
- Guest speakers
- Employer led community projects
- Trips and visits to the workplace
- Entrepreneurial projects
- Competitions

**Apprenticeship programme available
- see page 51**

Certificate in Culinary Skills

1 year
Level 1

Location: Rochdale campus

Entry requirements: 4 GCSEs grade 1 or 2 to include English and Maths

Progression: Level 2 Culinary Skills

FIND OUT MORE>

Diploma in Culinary Skills

1 year
Level 2

Location: Rochdale campus

Entry requirements: 4 GCSEs grade 3 or above to include English and Maths

Progression: Level 3 Professional Cookery

FIND OUT MORE>



Technical Certificate in Professional Cookery

1 year
Level 2

Location:

Rochdale campus

Entry requirements

4 GCSE grade 4 in English, grade 3 in maths plus
2 others at grade 3

Progression

Level 3 Professional Cookery

[FIND OUT MORE>](#)

Diploma in Professional Cookery

1 year
Level 3

Location:

Rochdale campus

Entry requirements

Relevant level 2 qualification

Progression

Employment or Higher Education

[FIND OUT MORE>](#)

Your learning ladder

Level 3: Culinary Skills

Level 2: Professional Cookery

Level 1: Introduction to
Hospitality Industry

Employers we work
with on a regular basis:

- The Medicine Tap
- The Lancashire Veteran Society
- The Lancashire Hospitality Company
- Fairshare
- Rochdale Food bank

And many more...



Catering and bar managers

National average

£21,370

£16,030

Low

£27,780

High

Employed nationally

64,538

by 2026

-5.2%

Y Pathways

Chefs

National average

£20,820

£15,620

Low

£27,070

High

Employed nationally

227,276

by 2026

-5.2%

Y Pathways





“Inspiring confidence in students is really important, particularly since I believe that confidence drives success.

Confidence is about believing that you can do something, believing that it’s not only others who can succeed but that you can succeed too.”

Julia Heap
Principal and Chief Executive



WE ARE HOPWOOD



Our learners are
at the **heart of**
everything we do



98% pass rate
for L3 Extended
Diploma courses



Work Experience
to make you the
most employable

THERE ARE SO MANY REASONS TO CHOOSE HOPWOOD HALL COLLEGE!



**Fantastic enrichment
opportunities** including
international trips



Rated '**Good**' &
'Strong for Skills'
by Ofsted



**Thousands of
links** with local
employers

MIDDLETON CAMPUS

Rochdale Road
Middleton M24 6XH
Tel: 0161 643 7560

ROCHDALE CAMPUS

St. Mary's Gate
Rochdale, OL12 6RY
Tel: 01706 345 346

e. enquiries@hopwood.ac.uk
www.hopwood.ac.uk



Funded by

**GREATER
MANCHESTER**
DOING THINGS DIFFERENTLY FOR OUR **WORKFORCE**